

Diver Platform[®]

Why upgrade to Program Advisor 4.0?



Turbocharge Your Sales by Using Data to Make Better Decisions

Program Advisor is quickly becoming Dimensional Insight's most popular product for the beverage alcohol industry. By getting a handle on what is going on with programs throughout the enterprise at any given moment, users find Program Advisor to be mission-critical to achieving company goals.

Here are some frequently asked questions about Program Advisor.

➤ What is Program Advisor?

Program Advisor is an enterprise-wide sales application. Individuals in every part of the company can have access to crucial role-based information. This role-based information helps individuals improve their sales process, which leads to efficiencies, time-savings, and increased profitability.

➤ Why should I upgrade?

The #1 reason to upgrade is speed. Built on Diver Platform 7.1, version 4.0 of Program Advisor leverages Spectre, the columnar database that returns queries at a lightning-fast speed.

There are also numerous other improvements that we list on the backside of this document.

➤ What types of programs are handled by Program Advisor?

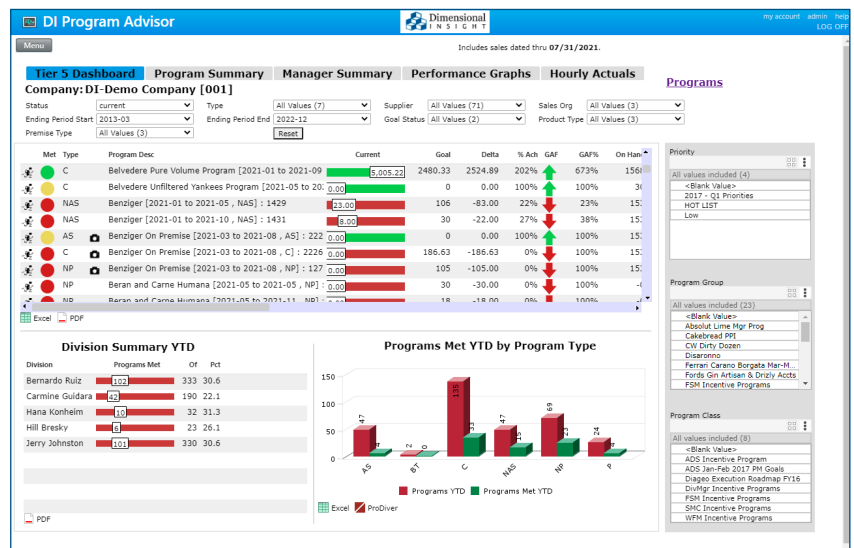
Program Advisor assists with goals, promotions, incentives, and blitzes.

➤ What types of users can use Program Advisor?

Employees use Program Advisor at every level of the company: support staff, sales reps, and managers. Everyone works with centralized information about all of their programs for decisions based on current information.

➤ On which devices can I use Program Advisor?

Program Advisor is available on desktop computers, laptops, and Apple iOS tablets and phones. Now you can check your program results at any time of the day, inside and outside the office.



Enhancements included in the 4.0 Release

Name	Goal Period	Calculated Goal	recalc_goals	Manual/Override Goal	Program Period	Payout Group	Override Payout	Calculated Payout	Dollars Calculated
ADAMS, THEODORE [315]	53.01	2.32	<input type="checkbox"/>		2.22	1			
AN, YONG K [412]	47.53	2.08	<input type="checkbox"/>	3	0	1			
ARIZMENDI JR., WILSON ...	214.4	9.35	<input type="checkbox"/>		4.33	1			
BEER, HEINZ [215]	42.53	1.86	<input type="checkbox"/>		10.17	1			
BHARATIA, DILIP [283]	166.13	7.25	<input type="checkbox"/>		3.17	1			
BILYK, CRYSTAL [269]	7.99	0.35	<input type="checkbox"/>		0	1			
BLOCK, KENNETH [401]	114.13	4.98	<input type="checkbox"/>		4.33	1			
BOYLAN, PAT [424]	182.58	7.97	<input type="checkbox"/>		3.67	1			
BRANDT, ROBERT [213]	114.26	4.99	<input type="checkbox"/>		2.5	1			
BROOKS, MARK [279]	325.16	14.18	<input type="checkbox"/>		1.44	1			
CALLAHAN, CHRISTINE [2...	288.48	12.58	<input type="checkbox"/>		9	1			
CAMBRIA, THOMAS [436]	479.86	20.93	<input type="checkbox"/>		4.77	1			
CANGIALOSI, JOHN M. [2...	0	0	<input type="checkbox"/>		0	1			
CHIEFFO, CHRIS [456]	77.61	3.39	<input type="checkbox"/>		8.78	1			
CIMILUCA, JOHN B [298]	42.6	1.86	<input type="checkbox"/>		0.78	1			
CORDIVARI, DEAN [287]	870.87	37.98	<input type="checkbox"/>		19.89	1			
CREAM, VINCENT [474]	178.2	7.78	<input type="checkbox"/>		0.25	1			
CRISOLOGO, JOHN [492]	110.22	4.81	<input type="checkbox"/>		5.22	1			
DANAUASKAS, MARK [316]	34.84	1.52	<input type="checkbox"/>		5.11	1			
Totals	23,285.80	1,000.49		3.00	687.28		0.00	0.00	

➤ General:

1. The entire application has been converted to run using the Diver Platform version 7.1 and Spectre. This conversion brings a significant improvement in speed and functionality across many areas of the application.
2. Program Advisor results are now available on both the iPad and the iPhone. Now you can check your program results at any time of the day, inside and outside the office.
3. Survey Advisor has been integrated with Program Advisor. You can now make programs dependent on required photography uploaded to a survey completed within Survey Advisor.
4. For any programs that have ended but have not yet been archived, our back-end processing has been enhanced so that the currently responsible sales rep and associated customer/product responsibility will remain as they were at month-end. Sales and product organization changes that occur after month-end will no longer impact programs that have ended but have not yet been archived.
5. You can now control top to bottom scrolling on windows via the wheel on the mouse. Using the mouse wheel dramatically improves the speed of scrolling and is helpful when looking through a large amount of information.

➤ Edit Programs Browse Screen

1. A new option has been added so that you can make multiple copies of a program simultaneously (up to 10). In earlier versions of Program Advisor, you could only make one copy of a program at a time.
2. A camera image has been added to the edit program listing. This image appears next to any program that has survey picture requirements from Survey Advisor.

➤ Program Header/Setup Screen

1. The Edit Programs page now has a new look and feel. There is a new design for the Edit Programs Form and the program filter buttons.
2. A new option has been added to the Program Minimum screen. You can now specify that specific labels, sizes, brands, or items are mandatory and required for the program. If the account doesn't purchase the needed products, then none of the sales to that account will count towards the program.
3. A new Program Limits option has been added to the current Brand Limits screen to designate limits for the entire program. The current Brand Limits option only allows limits by brand. This new

option will enable you to place overall limits for the whole program as well as by brand. The Brand Limits button is now called Program Limits.

4. We have added the ability to do Placements by Program Group.
5. A new entry field has been added to the Program Header screen to enter the program's estimated program costs. These estimates will be used in future reporting to show actual versus estimated costs (split by On-Premise / Off-Premise).
6. A new option has been added to the Combo selection to include only combo sales and exclude regular sales. This option will allow you to track only the sales completed as part of a combo.
7. A new Survey Filter button will allow you to connect a program to a set of Survey Advisor questions and responses. Initially, this will be for survey pictures. In the future, we will support all survey responses. Accounts omitted from survey results do not contribute to program sales for that account.
 - a. On the Dashboard, a camera icon appears next to programs with picture requirements.
 - b. On "Show Customers," an indicator appears next to each account with program pictures completed.
8. A new option has been added to the program filters (products, basis products, sales reps, and customers) so that the end-user can now upload filter files from their PC directly into the application.

➤ Program Payouts

1. The Payout Per selection option on the payout screen has been expanded to include Per SKU and Per Size. Now you can do payouts based on the number of SKUs sold and the number of sizes sold.
2. The Sell Units option on the payout screen now includes Invoices.
3. Identifying a program update in progress is easier now that the Program Description, Program ID, and Segment ID appear at the top of the Payout Screen.
4. We have added the ability to filter products on the payout screen. You can now define a payout based on a subset of the products included in the overall program. For example, a program could be tracking all products for supplier 123, but you only want to pay out \$5 per case for just the 50ml products or just \$3 per case for brand X.
5. The "into the same account" section now offers an option to limit payouts to only qualified sales. You might use this option if you are tracking placements and you want to pay out for additional cases sold only as part of that placement.

Program Desc		salesrep_tier_5	Segment ID
Benziger On Premise [2021-03 to 2021-08, C] : 2226		DI-Demo Company [001]	2226
Program ID	118	Customers	3,270
Program Period	2021-03 to 2021-08	Chains	49
Goal Period	2020-03 to 2020-08	Brands	1
Buy Period	N/A to N/A	Products	64
No-Buy Period	2020-01 to 2020-12	Sales Reps	105
Program Specs:		Program Report	
On Premise: Min.	2 Cases	Program Analyzer	
Off Premise: Min.	Cases	Customer Prod Detail	
Min. Criteria	By Account	Salesrep Prod Detail	
Case Definition	9L Cases	Free Goods & Samples	remove
Returns	include	Cases Only	All
Initial Order Only	N	Placement Level	Item
		Combo Definition	Detail only
Created By	mbrockway		
Created At	2020-09-10		
Last Updated By	DSabio		
Last Updated At	2020-10-01		
Goal Specs:			
Goal Type	Percentage Increase		
Goal Value	10		
Minimum Goal	5		
Entire House Indicator	N		
Min. Tier	Tier 1		
Program Priority	N/A		
Program Group	N/A		
ID	Product Filter		
111	include product_supplier=THE WINE GROUP [057],product_brand=BENZIGER [06069]		
ID	Customer Filter		
13	include customer_premise=On Premise		

➤ Dashboards

1. The Entire House Indicator and the Program ID are now part of the Show Program Info screen.
2. The current Manager Summary tab on Tier 5, Tier 4, Tier 3, and Tier 2 dashboards has been replaced with a new Manager Summary report. Now the manager can see all of their programs across all of their direct reports simultaneously on one report.
 - a. The new report is a program cross-tab report for the manager, showing programs going down and each of the manager's direct reports going across.
 - b. The Goal, Current Sales, and Delta now show for each program/direct report.
3. The product on-hand, on-order, and last order date are on dashboards. The Show Products screen displays On Hand Amount, On Order Amount, and On Order Date next to each item in the program.
4. The last updated sales date has been added to most dashboard screens so that users will know the most recent date for sales included in Program Advisor.
5. Dashboards have a new Show Sales Rep Product Details report. It is similar to the Show Customer Product Details report, except that it shows Sales Reps going down the left side of the report and Products going across.
6. The Program Detail Report now shows the total number of sales reps that are ranked. This way, a rep can see the total number of reps against which he ranked.
7. A camera image has been added to the dashboard program listing. This image displays next to any program that has survey picture requirements from Survey Advisor.

➤ Edit Goals

1. The performance has been dramatically improved on the main Edit Goals screen. Now the Edit Goals screen displays in a matter of seconds.
2. A new option has been added to the import goal overrides so that the end-user can now upload the goal override files from their PC directly into the application.

➤ Security

A new option has been added to the security processing so that the system administrator can control whether users need to change their password during their first log-in into the application.

About Dimensional Insight

Dimensional Insight is a leading provider of integrated business intelligence and performance management solutions. Our mission is to make organizational data accessible and usable so everyone from analysts to line of business users can get the information they need to make informed, data-driven decisions.



60 Mall Road
Burlington, MA 01803
t: 781.229.9111
www.dimins.com

©2024 Dimensional Insight, DiveTab, and the Dimensional Insight logo are trademarks of Dimensional Insight, Inc.