


BI Visualizations & Displays for Discrete & Process Manufacturing






Simplified Navigation

Organize your dashboards, reports and KPIs so information can be easily found and acted upon.
Role-based access ensures information is securely shared and managed.


 **Dimensional Insight Manufacturing**

my accountaboutlog off


Menu




Introduction




Executive Dashboard




Factory Financials



Quality & Diagnostics



Overall Equipment Effectiveness



Ad-Hoc Analysis

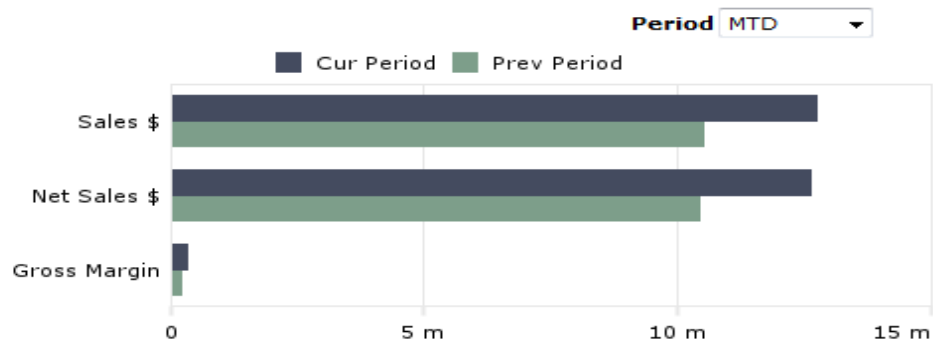
Executive Dashboard

Your key metrics rolled up into a single view. "Dive" down access to detail is available through our built-in analytics clients (ProDiver or NetDiver) or simply export to Excel for further analysis.

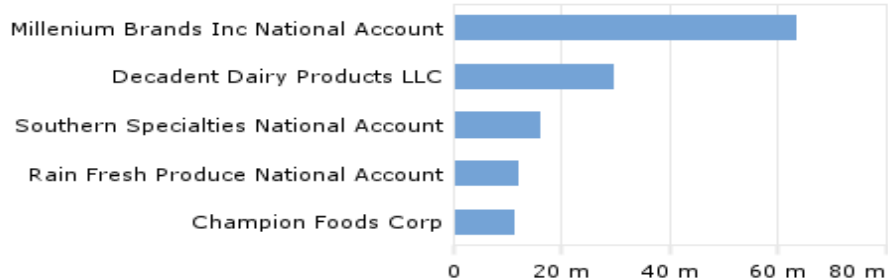
Corporate Key Measures

	fiscal YTD	last fiscal Year	% +/-
Sales (\$K)	95,269	147,880	-35.6 ●
Net Sales (\$K)	94,363	146,755	-35.7 ●
Gross Margin (\$K)	2,271	3,613	-37.1 ●

Key Measures by Period



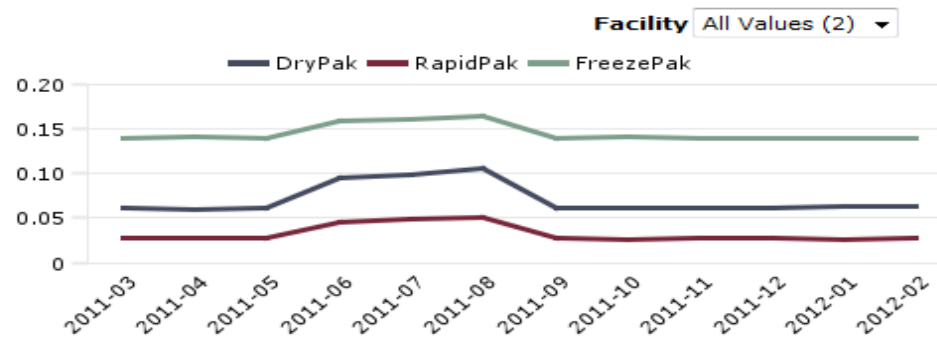
Top 5 Customers by Total Net Sales (MTD)



OEE & Defect Measures (MTD)

facility	avg OEE	avg defects	units produced
Byfield	36.10 ▼	29 ▲	926,308 ▼
Newbury	36.07 ▲	31 ▼	478,196 ▼

Defect Rate by Machine Type



Top 5 Customers by Total Gross Margin (MTD)



Key Financial Metrics

Provide Executives and departmental analysts with a consolidated view of financial performance by bringing data together from your disparate systems (CRM, ERP, General Ledger, Accounting Systems, Sales History) to better manage financial performance.

Overview

Customers

Sales Team

Sales Budget

Sales Team Org. Chart

Key Financial Measures

	fiscal YTD	last fiscal Year	% +/-	
Sales (\$K)	95,269	147,880	-35.6	● ● ● ● ●
Net Sales (\$K)	94,363	146,755	-35.7	● ● ● ● ●
Gross Margin (\$K)	2,271	3,613	-37.1	● ● ● ● ●

Sales (K) MTD

\$12,734

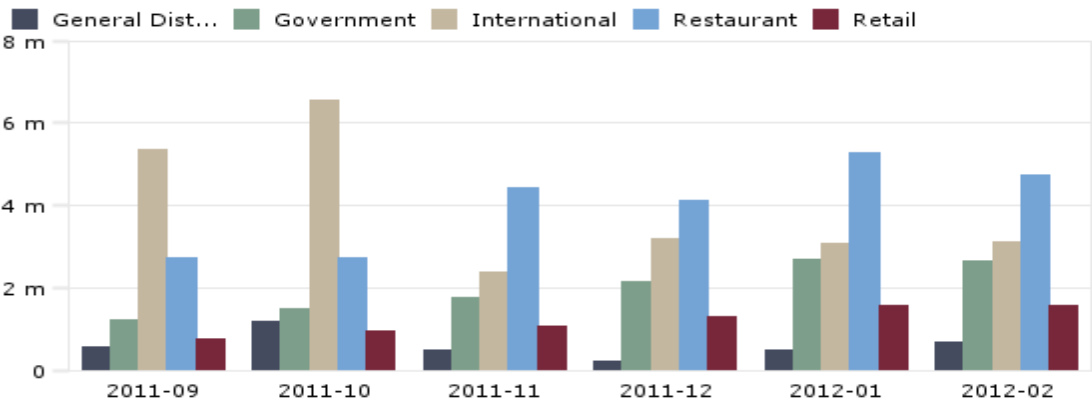
Net Sales (K) MTD

\$12,626

Gross Margin (K) MTD

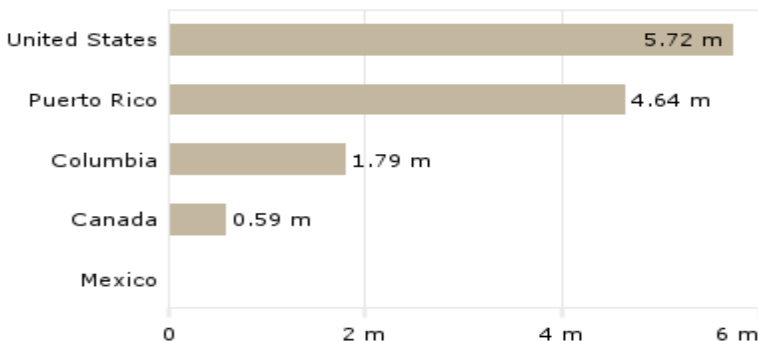
\$341

Monthly Sales by Sales Group

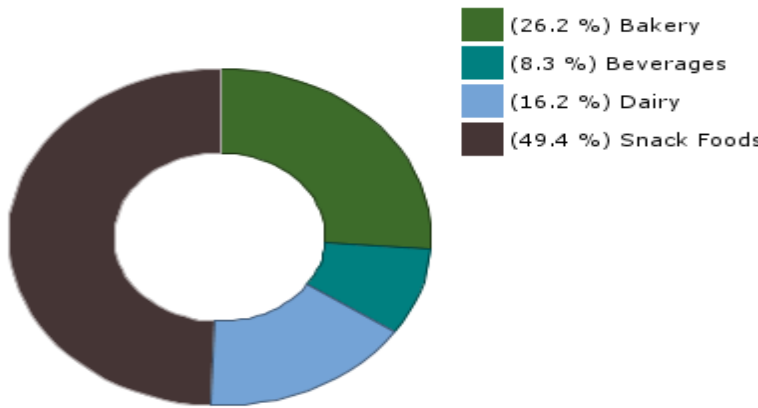


Sales by Country

Timeframe MTD



Sales by Division



Customer Performance and Top Sales Data

Identify opportunities for improvement by rolling up best and worst performing customers into a dashboard view. Immediately access detail within the dashboard environment by clicking on items of interest to Dive into further analysis.



Dimensional
Insight

Manufacturing

[my account](#) [about](#) [log off](#)

[Back](#) [Home](#) [Manufacturing](#)

Customers



Overview

Customers

Sales Team

Sales Budget

Sales Team Org. Chart

Timeframe

MTD

YTD

Fiscal YTD

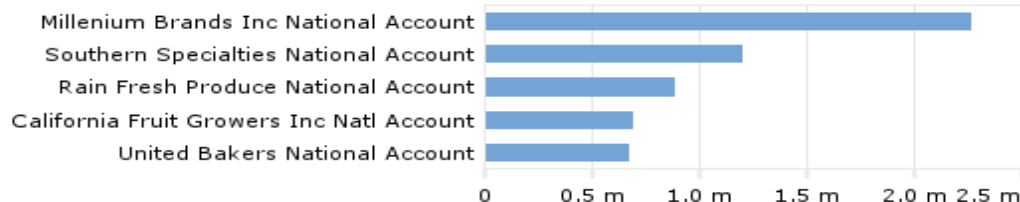
Last FY

Account Country All Values (5)

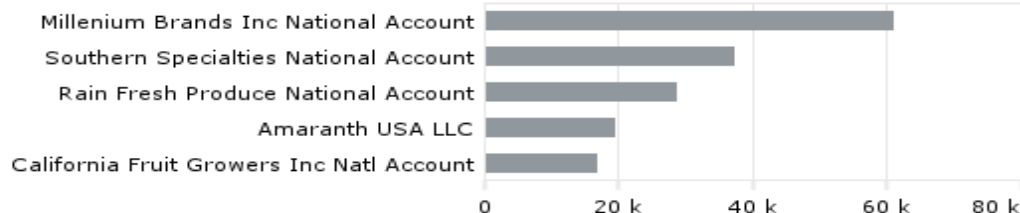
Sales Group All Values (5)

Division All Values (4)

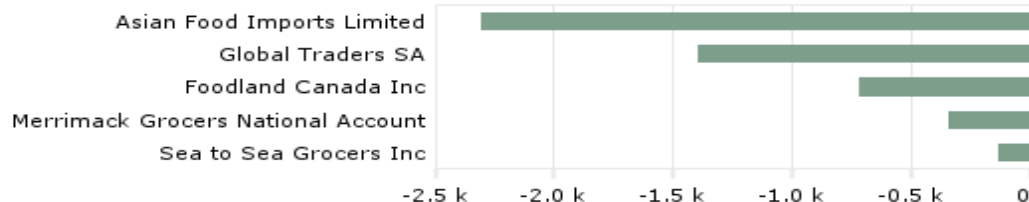
Top 5 Customers by Total Net Sales (\$)



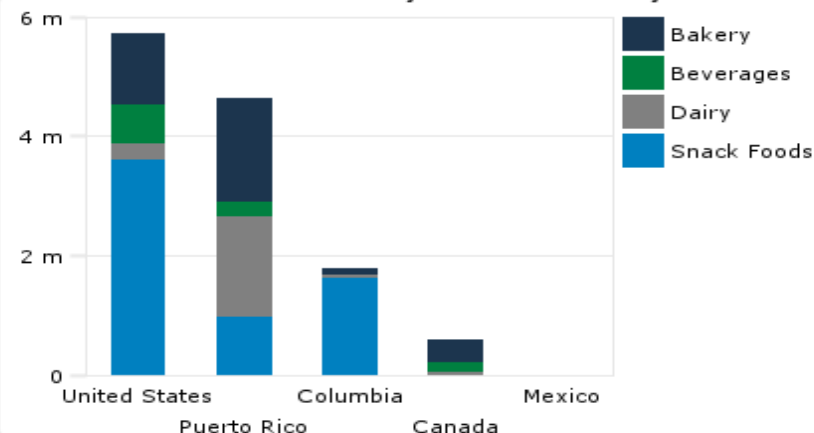
Top 5 Customers by Total Gross Margin (\$)



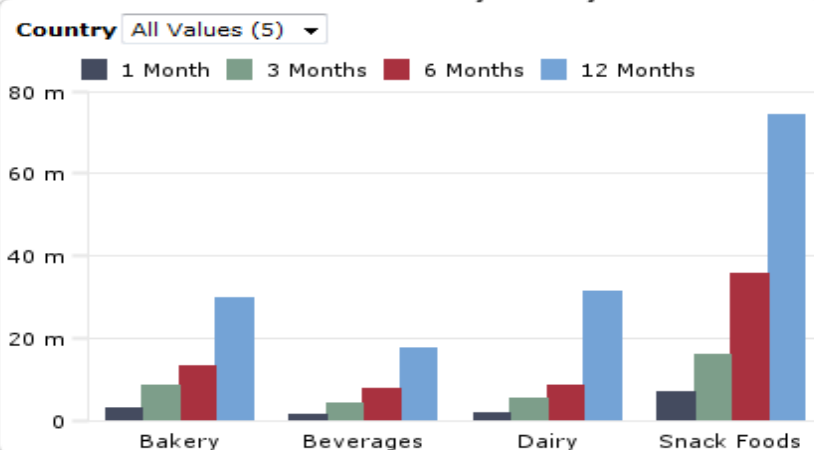
Bottom 5 Customers by Total Gross Margin (\$)



Total Sales by Customer Country



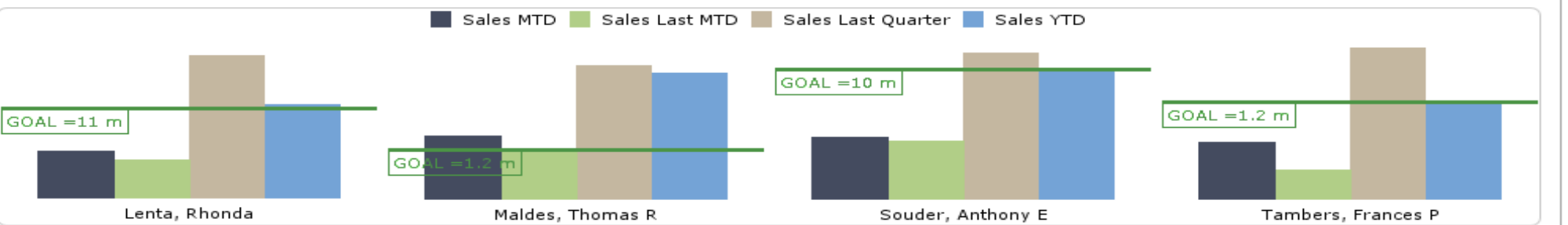
Gross Sales by Country



Sales Performance Dashboards

Pick from several styles of sales performance dashboards or scorecards to reveal trends by Sales Manager or individual Sales Rep.

By Sales Manager



By Salesperson

Top N	MTD	last MTD	% +/-		QTD	last QTD	% +/-		YTD	last YTD	% +/-	
Quincy, Marla	\$557,097	\$236,977	135.08	📈	\$893,903	\$1,287,761	-30.58	📉	\$893,903	\$572,208	56.22	📈
Roberts, Tawny	\$120,139	\$96,763	24.16	📈	\$242,291	\$348,935	-30.56	📉	\$242,291	\$131,529	84.21	📈
Rawlston, Chad	\$11,508	\$5,133	124.20	📈	\$17,493	\$7,313	139.21	📈	\$17,493	\$26,907	-34.99	📉
Smithson, Ernie G	\$6,313	\$5,944	6.21		\$13,734	\$11,916	15.26	📈	\$13,734	\$2,391	474.39	📈

Quality Assurance

Defect summary, Yield, and Defect Rates by Machine Operator allow plant managers to manage by exception and focus their attention on the areas that need it most.

Quality Assurance

Machine Diagnostics

Daily Defect Summary

Defect	today	yesterday	% +/-		cur MTD	prev MTD	% +/-	
Contaminants	424	403	5.21	●	9,837	22,139	-55.57	●
Spoilage	835	780	7.05	●	21,129	47,492	-55.51	●
Taste	824	789	4.44	●	19,968	44,626	-55.25	●
Recipe Failure	415	397	4.53	●	9,957	22,041	-54.83	●
N/A	519	518	0.19		13,643	30,627	-55.45	●

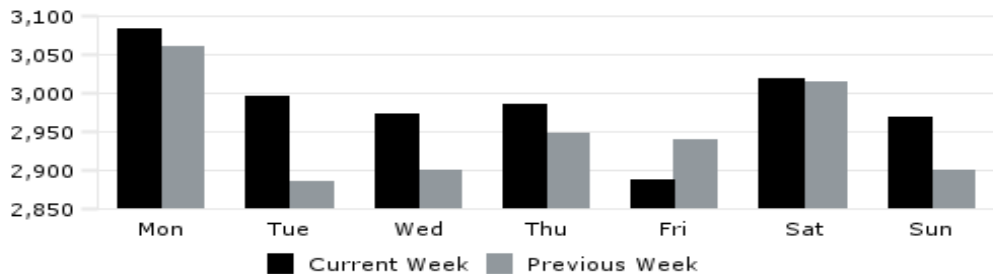
Current Shift % Yield by Product

Facility

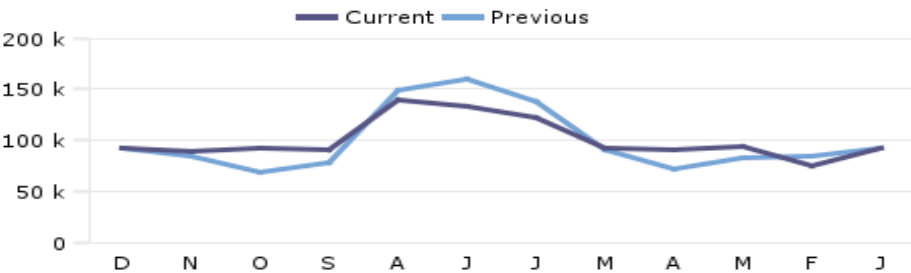
- Newbury
- Byfield

Bagels	94.55
Cakes	95.12
Crackers	91.31
Donuts	73.81
Fruit Drinks	82.80
Ice Cream	98.06
Muffins	95.41

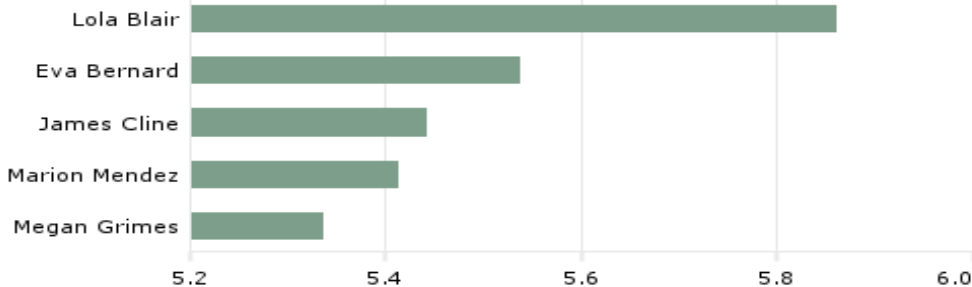
Total Weekly Defects



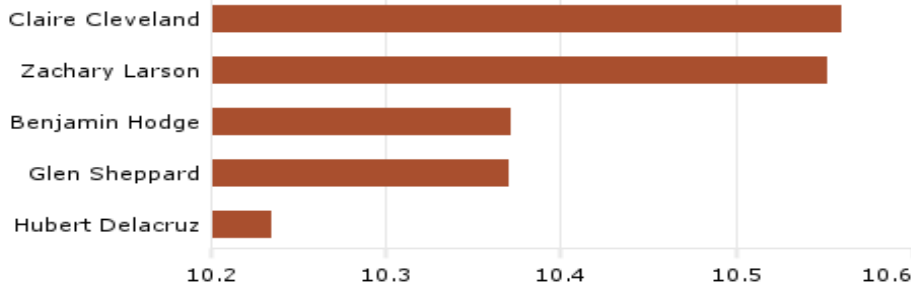
Total Defects by Trailing 12 Months



Top 5 Daily Defect Discovery Rates by Inspector

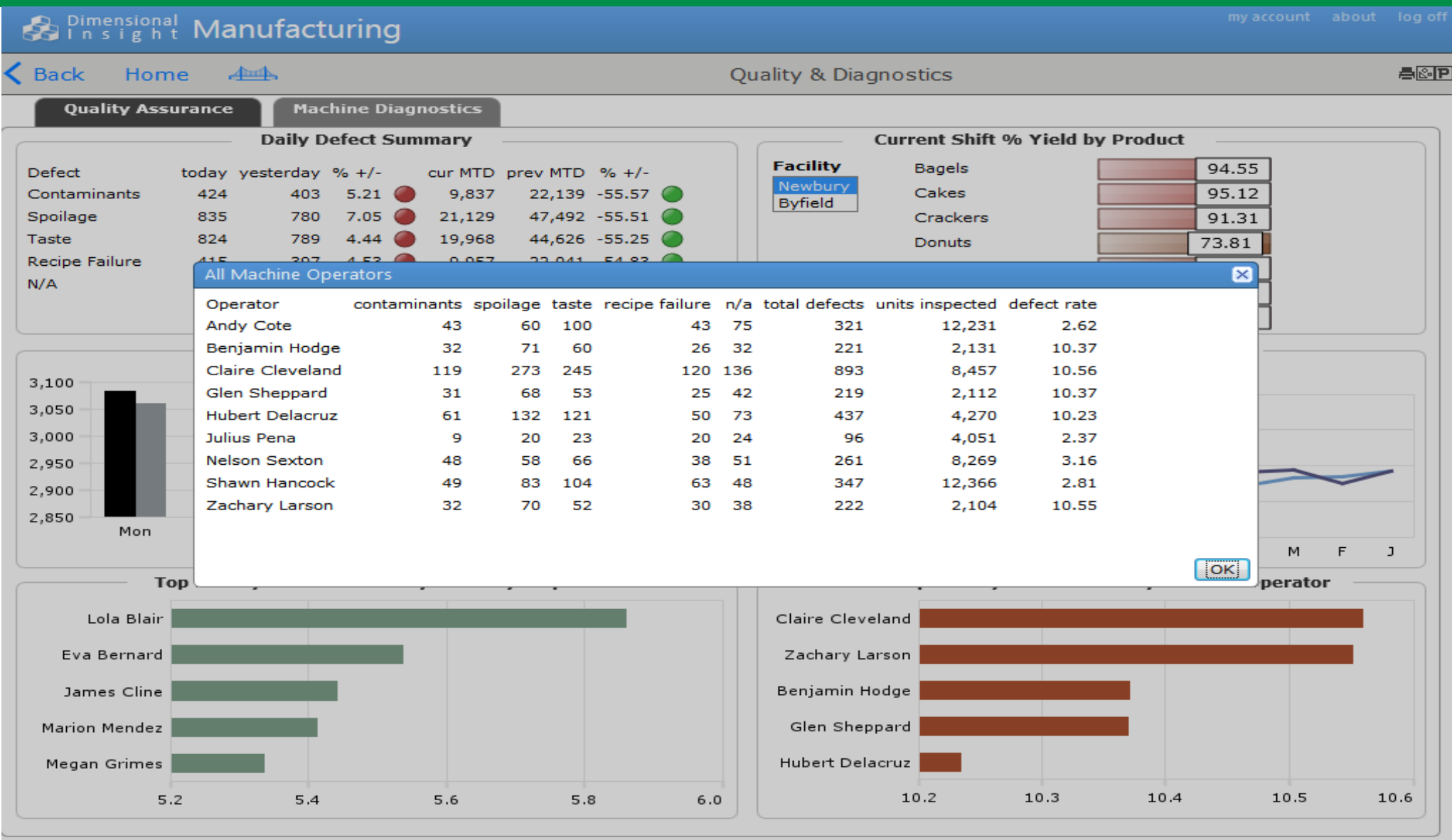


Top 5 Daily Defect Rates by Machine Operator



Self-Service: One-Click Access to Detail

Answer your own questions with embedded analytics capabilities. All indicators, charts, and graphics can be made "live", exported to Excel for further analysis or opened in a powerful ad hoc analysis environment allowing you to identify root cause and problem solve quicker.



Machine Diagnostics

Statistical process control charts and customizable run rules reduce costly downtime and process failures.



Dimensional
Insight

Manufacturing

[my account](#) [about](#) [log off](#)

[Back](#) [Home](#)

Machine Diagnostics



Quality Assurance

Machine Diagnostics

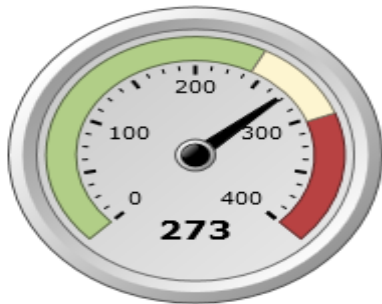
Machine Type DryPak

Machine ID 25

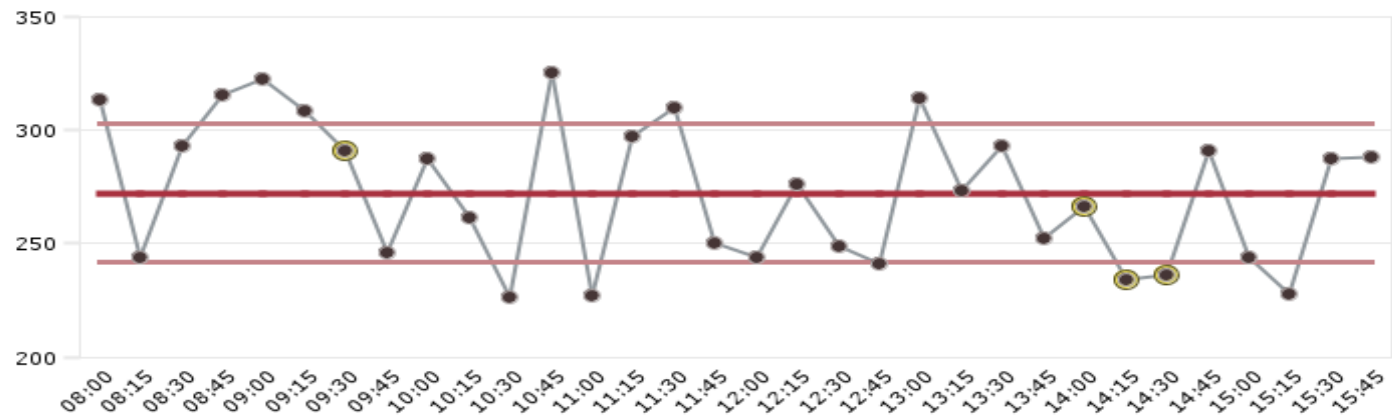
Date 2012/02/25

Shift Day

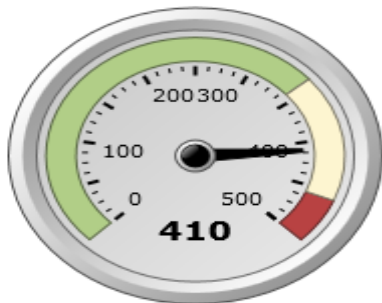
Average Heat Seal Temperature



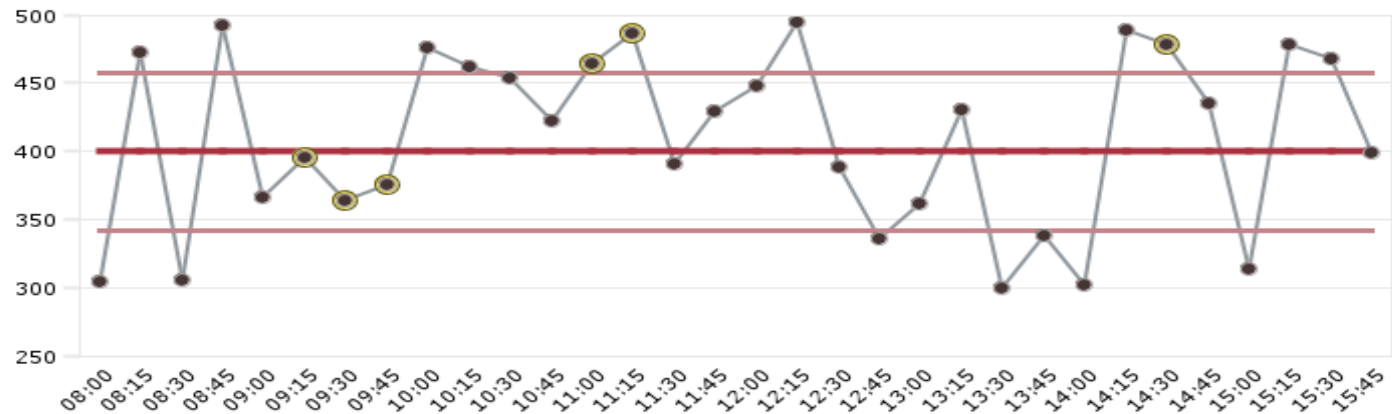
Temperature



Average Piston Pressure



Pressure



Equipment Effectiveness

Apply predictive maintenance technology and shift maintenance and service strategies moving your organization from reactive and preventive to proactive and predictive.



Manufacturing

my account about log off

< Back Home

Overall Equipment Effectiveness



All Facilities

Newbury

Byfield

Shift

Day Evening Night

Bottom 5 Performing Machines by OEE

ID	type	today	yesterday	% +/-	
21	RapidPak	34.3	36.8	-6.7	
12	RapidPak	34.6	35.6	-2.9	
26	DryPak	34.8	33.2	4.9	
22	RapidPak	34.9	38.6	-9.4	
13	FreezePak	35.3	34.9	1.3	

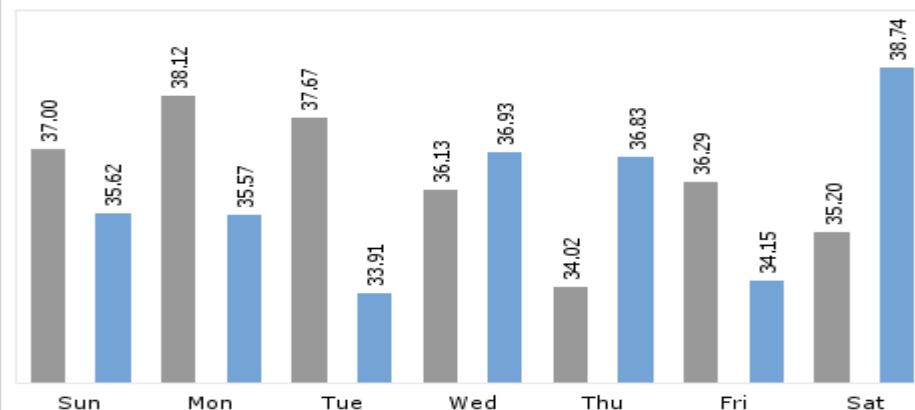
Top 5 Performing Machines by OEE

ID	type	today	yesterday	% +/-	
28	RapidPak	76.3	75.7	0.8	
18	FreezePak	74.4	75.2	-1.0	
23	RapidPak	74.3	72.2	2.9	
5	RapidPak	73.7	68.2	8.0	
10	RapidPak	72.4	68.0	6.5	

Average OEE by Machine Cluster

Machine Cluster [01 - 03]

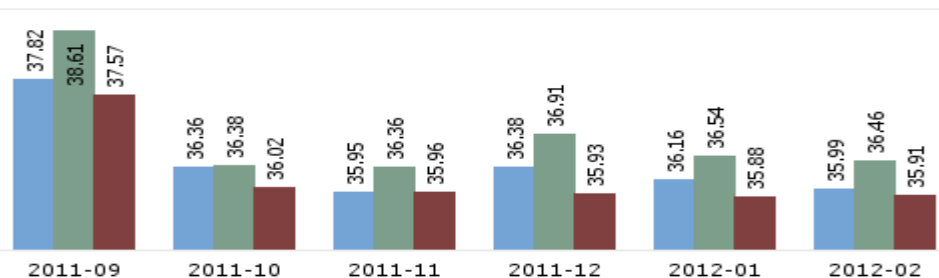
First Machine Second Machine Third Machine



Average OEE by Machine Type & Product Line

Product All Values (11)

DryPak FreezePak RapidPak



Outstanding Manufacturing Jobs

Period 30 Day

Job Entry Date	ID	Description
2012/12/13	13220-92	AppleSnax JuicePaks
2012/12/17	24694-74	Frozen Blueberry Pies
2012/12/23	13649-25	Special order pastries
2012/12/31	27350-57	Special order sorbet

Excel NetDiver ProDiver

View OEE by Facility, Product Line or Shift

All Facilities Newbury Byfield

Shift
Day Evening Night

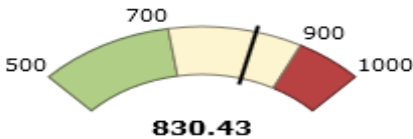
Average OEE & Defects Found by Product

Product	AVG DEFECTS FOUND		AVG OEE		
	today	yesterday	today	yesterday	% +/-
Bagels	9.3	9.0	36.4	35.6	2.26 🟢
Cakes	12.7	10.0	36.5	33.9	7.83 🟢
Crackers	3.7	4.0	35.5	37.7	-5.70 🔴
Donuts	3.3	3.0	35.7	34.5	3.29 🟢
Fruit Drinks	169.7	171.0	34.5	36.1	-4.44 🔴
Ice Cream	5.7	7.0	37.6	36.9	1.76 🟢
Muffins	19.3	14.0	34.6	37.0	-6.34 🔴

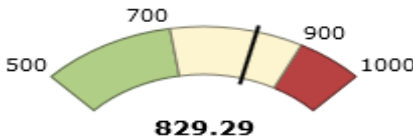
Average OEE & Defects Found by Machine Operator

Operator					
	today	yesterday	today	yesterday	% +/-
Benjamin Hodge	31.6	33.3	36.5	35.5	2.60 🟢
Claire Cleveland	32.6	31.1	35.3	36.6	-3.76 🔴
Zachary Larson	31.7	29.0	35.8	35.7	0.25 🟢

Average Unplanned Downtime Minutes



Current Week



Previous Week

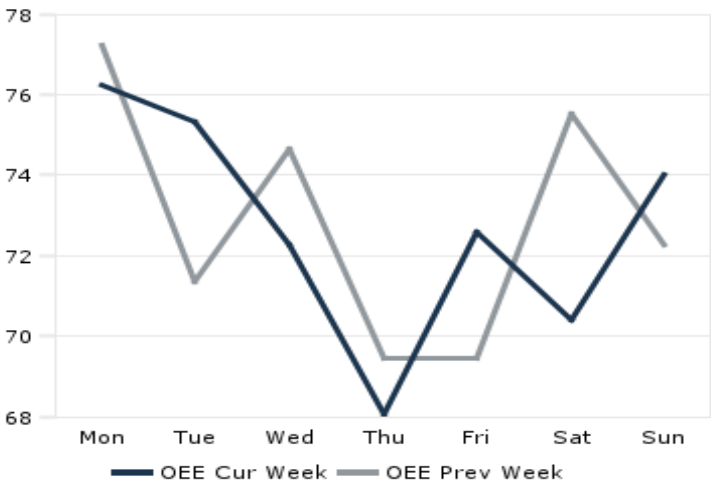
Product

Bagels
Cakes
Crackers
Donuts
Fruit Drinks
Ice Cream
Muffins

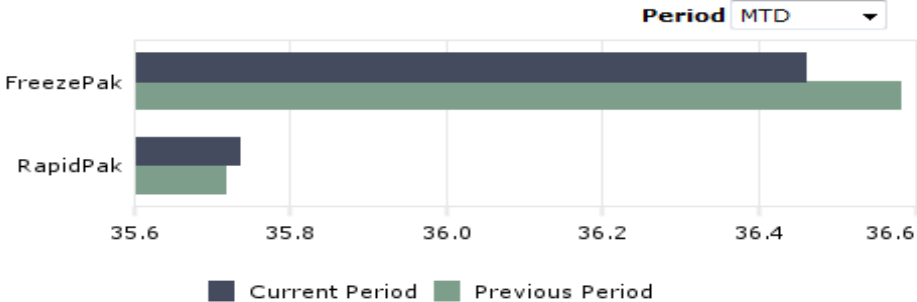
Machine ID

1
3

Daily OEE by Product Line



Average OEE by Machine Type



About TTS



BI Built for Manufacturing

With purpose-built business intelligence applications that accelerate your time to value, Dimensional Insight has decades of experience developing high-impact BI solutions for discrete and process manufacturers. Optimizing your processes and identifying inefficiencies requires a complete understanding of how products and customers consume resources, including a data-driven view of your supply chain, support functions, and infrastructure. Our core BI platform, The Diver Solution™ (Diver) provides true manufacturing intelligence, enabling managers to conduct cost and profitability analysis and gain visibility into operations. **Need better visibility into asset utilization, quality, or costs? Ask us how we can help.**