

DI-UPDATER



DATA → INSIGHT → ACTION

Revision Doc-UP-70-040919-04
2019
Dimensional Insight

DI-UPDATER

DI-Updater 7.0 Manual Revision Doc-UP-70-040919-04

Disclaimer

Dimensional Insight, Inc. disclaims the implied warranties of merchantability and fitness for a particular purpose and makes no express warranties except as may be stated in its written agreement with and for its customer.

In no event is Dimensional Insight liable to anyone for any indirect, special, or consequential damages. The information and specifications in this manual are subject to change without notice.

Copyright © Dimensional Insight Inc., 1991-2019.

Trademarks

Microsoft®, Windows®, and Excel® are registered trademarks of Microsoft Corporation in the United States and other countries.

Adobe®, Acrobat®, and Distiller® are registered trademarks of Adobe Systems Incorporated.

Limited Warranty and Liability

Dimensional Insight, Inc. (DII) is the owner of the Software to which this documentation applies. The Software is subject to copyrights, patents and other intellectual property rights of DII, is furnished only under a license to use it, and no ownership rights are conveyed in the Software under any circumstances. License rights are set out in written license agreements entered into by all licensees either prior to delivery of the Software or prior to first use of the Software. No use of the Software is permitted unless the user has first agreed to the terms of the license. **DO NOT USE THE SOFTWARE IF YOU HAVE NOT REVIEWED AND AGREED TO THE TERMS OF THE LICENSE.**

THE SOFTWARE IS FURNISHED “AS IS” AND WITHOUT WARRANTY OF ANY KIND OR NATURE TO THE EXTENT PERMITTED BY APPLICABLE LAW. DII EXPRESSLY DISCLAIMS ALL WARRANTIES, EXPRESS, IMPLIED OR STATUTORY, INCLUDING THE IMPLIED WARRANTIES OF MERCHANTABILITY, FITNESS FOR PARTICULAR PURPOSE, SATISFACTORY QUALITY AND NONINFRINGEMENT, AND THEIR EQUIVALENTS UNDER ANY LAW OF ANY JURISDICTION. IF APPLICABLE LAW IMPLIES ANY WARRANTIES OR CONDITIONS WITH RESPECT TO THE SOFTWARE, ALL SUCH WARRANTIES OR CONDITIONS ARE LIMITED TO A PERIOD OF THIRTY (30) DAYS FROM THE DATE OF DELIVERY OF THE SOFTWARE TO THE LICENSEE.

DII DOES NOT WARRANT THAT THE FUNCTIONS CONTAINED IN THE SOFTWARE WILL MEET YOUR REQUIREMENTS, OR THAT THE OPERATION OF THE SOFTWARE WILL BE UNINTERRUPTED OR ERROR-FREE, OR THAT DEFECTS IN THE SOFTWARE WILL BE CORRECTED. FURTHERMORE, DII DOES NOT WARRANT OR MAKE ANY REPRESENTATIONS REGARDING THE USE OR THE RESULTS OF THE USE OF THE

SOFTWARE IN TERMS OF THEIR CORRECTNESS, ACCURACY, RELIABILITY, OR OTHERWISE. SHOULD THE SOFTWARE PROVE DEFECTIVE, LICENSEE (AND NOT DII, ITS DISTRIBUTORS, DEALERS OR EMPLOYEES) WILL ASSUME THE ENTIRE COST OF ALL NECESSARY SERVICING, REPAIR, OR CORRECTION.

SOME STATES AND JURISDICTIONS DO NOT ALLOW THE EXCLUSION OF EXPRESS OR IMPLIED WARRANTIES OR CONDITIONS UNDER CERTAIN CIRCUMSTANCES, SO THE ABOVE EXCLUSIONS MAY NOT APPLY TO YOU. IF SUCH EXCLUSIONS DO NOT APPLY TO YOU, AND ONLY IN SUCH EVENT, YOUR SOLE REMEDY WILL BE, AT DII'S OPTION, REPAIR OR REPLACEMENT OF THE SOFTWARE OR A REFUND OF THE PRICE PAID BY YOU FOR THE SOFTWARE. THIS WARRANTY GIVES YOU SPECIFIC LEGAL RIGHTS. YOU MAY ALSO HAVE OTHER LEGAL RIGHTS WHICH VARY FROM STATE TO STATE AND JURISDICTION TO JURISDICTION.

While efforts have been made to ensure THAT the program and its documentation are free from defects, under no circumstances and under no legal theory, whether tort, contract, or otherwise, shall DII, or its distributors, dealers or employees, be liable to you or any other person for any loss or damage sustained in connection with ANY ATTEMPT TO use the Software, including without limitation, any economic, consequential or other indirect loss or damage, even if DII has been previously advised of the possibility of such loss or damage. Some states and jurisdictions do not allow the exclusion or limitation of INCIDENTAL or consequential damages under certain circumstances, so this limitation and exclusion may not apply to you.

U.S. Export Administration Act: Restrictions on Exporting Software

The Software may include certain cryptographic software that may be subject to export controls under the U.S. Export Administration Act. The Software may not be exported to any country or to any foreign entity or "foreign person" to the extent prohibited under applicable U.S. government regulations. By downloading or using the Software, you are acknowledging and agreeing to the foregoing limitations on your right to export or re-export the Software, and are also representing and warranting that you are neither on any of the U.S. government's lists of export precluded parties nor otherwise ineligible to receive software containing cryptography that is subject to export controls under the U.S. Export Administration Act.

If a version of DiveLine that uses encryption is running, administrators must be aware that allowing users outside the United States to access data via certain DI-Clients qualifies as exporting encryption software (either the client executable or the Java applet sent to the browser). Export or re-export of encrypted software must be in accordance with the Export Administration Regulations. Diversion of encryption software contrary to U.S. law is prohibited.

Third Party Licensing

The licensing below applies to the third party encryption library routines ONLY.

This product may include software developed by the OpenSSL Project for use in the OpenSSL Toolkit (<http://www.openssl.org/>) [Copyright © 1998-2011 The OpenSSL Project. All rights reserved.]

This product may include cryptographic software written by Eric Young (eay@cryptsoft.com) [Copyright © 1995-1998 Eric Young (eay@cryptsoft.com). All rights reserved.]

Below are the two licenses which cover the use of these routines.

OpenSSL Project License

Copyright © 1998-2011 The OpenSSL Project. All rights reserved.

The OpenSSL toolkit stays under a dual license, i.e. both the conditions of the OpenSSL License and the original SSLeay License apply to the toolkit. See below for the actual license texts. Actually both licenses are BSD-style Open Source licenses. In case of any license issues related to OpenSSL please contact openssl-core@openssl.org.

Redistribution and use in source and binary forms, with or without modification, are permitted provided that the following conditions are met:

1. Redistributions of source code must retain the above copyright notice, this list of conditions and the following disclaimer.
2. Redistributions in binary form must reproduce the above copyright notice, this list of conditions and the following disclaimer in the documentation and/or other materials provided with the distribution.
3. All advertising materials mentioning features or use of this software must display the following acknowledgment: "This product includes software developed by the OpenSSL Project for use in the OpenSSL Toolkit. (<http://www.openssl.org/>)"
4. The names "OpenSSL Toolkit" and "OpenSSL Project" must not be used to endorse or promote products derived from this software without prior written permission. For written permission, please contact openssl-core@openssl.org.
5. Products derived from this software may not be called "OpenSSL" nor may "OpenSSL" appear in their names without prior written permission of the OpenSSL Project.
6. Redistributions of any form whatsoever must retain the following acknowledgment: "This product includes software developed by the OpenSSL Project for use in the OpenSSL Toolkit (<http://www.openssl.org/>)"

THIS SOFTWARE IS PROVIDED BY THE OPENSLL PROJECT "AS IS" AND ANY EXPRESSED OR IMPLIED WARRANTIES, INCLUDING, BUT NOT LIMITED TO, THE IMPLIED WARRANTIES OF MERCHANTABILITY AND FITNESS FOR A PARTICULAR PURPOSE ARE DISCLAIMED. IN NO EVENT SHALL THE OPENSLL PROJECT OR ITS CONTRIBUTORS BE LIABLE FOR ANY DIRECT, INDIRECT, INCIDENTAL, SPECIAL, EXEMPLARY, OR CONSEQUENTIAL DAMAGES (INCLUDING, BUT NOT LIMITED TO, PROCUREMENT OF SUBSTITUTE GOODS OR SERVICES; LOSS OF USE, DATA, OR PROFITS; OR BUSINESS INTERRUPTION) HOWEVER CAUSED AND ON ANY THEORY OF

DI-UPDATER

LIABILITY, WHETHER IN CONTRACT, STRICT LIABILITY, OR TORT (INCLUDING NEGLIGENCE OR OTHERWISE) ARISING IN ANY WAY OUT OF THE USE OF THIS SOFTWARE, EVEN IF ADVISED OF THE POSSIBILITY OF SUCH DAMAGE.

This product includes cryptographic software written by Eric Young (eay@cryptsoft.com). This product includes software written by Tim Hudson (tjh@cryptsoft.com).

Open SSLeay License

Copyright © 1995-2011 Eric Young (eay@cryptsoft.com). All rights reserved.

This package is an SSL implementation written by Eric Young (eay@cryptsoft.com).

The implementation was written so as to conform with Netscapes SSL.

This library is free for commercial and non-commercial use as long as the following conditions are aheared to. The following conditions apply to all code found in this distribution, be it the RC4, RSA, lhash, DES, etc., code; not just the SSL code. The SSL documentation included with this distribution is covered by the same copyright terms except that the holder is Tim Hudson (tjh@cryptsoft.com).

Copyright remains Eric Young's, and as such any Copyright notices in the code are not to be removed. If this package is used in a product, Eric Young should be given attribution as the author of the parts of the library used. This can be in the form of a textual message at program startup or in documentation (online or textual) provided with the package.

Redistribution and use in source and binary forms, with or without modification, are permitted provided that the following conditions are met:

1. Redistributions of source code must retain the copyright notice, this list of conditions and the following disclaimer.
2. Redistributions in binary form must reproduce the above copyright notice, this list of conditions and the following disclaimer in the documentation and/or other materials provided with the distribution.
3. All advertising materials mentioning features or use of this software must display the following acknowledgement: "This product includes cryptographic software written by Eric Young (eay@cryptsoft.com)." The word 'cryptographic' can be left out if the rouines from the library being used are not cryptographic related.
4. If you include any Windows specific code (or a derivative thereof) from the apps directory (application code) you must include an acknowledgement: "This product includes software written by Tim Hudson (tjh@cryptsoft.com)"

THIS SOFTWARE IS PROVIDED BY ERIC YOUNG ``AS IS'' AND ANY EXPRESS OR IMPLIED WARRANTIES, INCLUDING, BUT NOT LIMITED TO, THE IMPLIED WARRANTIES OF MERCHANTABILITY AND FITNESS FOR A PARTICULAR PURPOSE ARE DISCLAIMED. IN NO EVENT SHALL THE AUTHOR OR CONTRIBUTORS BE LIABLE FOR ANY DIRECT, INDIRECT, INCIDENTAL, SPECIAL, EXEMPLARY, OR CONSEQUENTIAL DAMAGES (INCLUDING, BUT NOT LIMITED TO, PROCUREMENT OF SUBSTITUTE GOODS OR SERVICES; LOSS OF USE, DATA, OR PROFITS; OR BUSINESS INTERRUPTION) HOWEVER CAUSED AND ON ANY THEORY OF LIABILITY, WHETHER IN CONTRACT, STRICT LIABILITY, OR TORT (INCLUDING NEGLIGENCE OR OTHERWISE) ARISING IN ANY WAY OUT OF THE USE OF THIS SOFTWARE, EVEN IF ADVISED OF THE POSSIBILITY OF SUCH DAMAGE.

The licence and distribution terms for any publically available version or derivative of this code cannot be changed. i.e. this code cannot simply be copied and put under another distribution licence [including the GNU Public Licence.]

Contents



- Chapter 1: Introduction 1-1**
 - How to Use This Manual 1-1
 - Contacting Support 1-1
 - What is DI-Updater? 1-2
 - Useful Definition 1-2
 - DI-Updater files 1-3
 - Server Files 1-3
 - Client Files 1-3

- Chapter 2: Installing & Configuring DI-Updater 2-1**
 - Installing & Configuring DI-Updater on the DiveLine Server 2-1

- Chapter 3: The DI-Updater Interface 3-1**
 - Login Screen 3-1
 - Startup Screen 3-2
 - Updates Available Area 3-3
 - Update Details Area 3-4
 - Menus 3-5
 - File Menu 3-5
 - Open Home Location 3-5
 - Open Package Location... 3-6
 - Change DiveLine Server 3-6
 - Preferences 3-7
 - Exit 3-7

DI-UPDATER

Edit Menu	3-8
Edit Download Locations...	3-8
Actions Menu.....	3-9
Select All Packages.....	3-9
Unselect Packages	3-10
Start Update...	3-10
Edit Packages.....	3-10
Refresh.....	3-10
Help Menu	3-11
About DI-Updater.....	3-11
Chapter 4: Creating & Editing Packages	4-1
Chapter 5: Viewing & Downloading Packages	5-1
Index	



Chapter 1

Introduction

How to Use This Manual

This manual is separated into five chapters:

- **Chapter 1, Introduction** contains an overview of the manual and a description of DI-Updater and its associated files.
- **Chapter 2, Installing & Configuring DI-Updater**, outlines DI-Updater server configuration.
- **Chapter 3, The DI-Updater Interface**, describes the DI-Updater Interface and each of its components.
- **Chapter 4, Creating & Editing Packages**, details DI-Updater package creation.
- **Chapter 5, Viewing & Downloading Packages**, explains how to use DI-Updater on a client machine.

Contacting Support

Customer support is available from 7:00 AM to 5:00 PM (Central Time).

Table 1-1: Technical Support Contact Information

Customer Type	Phone	Fax	Email
Domestic Users	920-436-8299	920-433-2378	support@dimins.com
International Users	+1-920-436-8299	+1-920-433-2378	international@dimins.com

What is DI-Updater?

DI-Updater is a DiveLine client for Microsoft Windows. It allows a Server administrator to give a DiveLine administrator the ability to grant access to **any** file from the DiveLine server for end-users to download for offline use.

The file types that a DiveLine administrator might want to allow a user to download include, but are not limited to, Models, Documentation, Installation files, Release Notes, and Graphics. Access to these files is independent of DiveLine's Access Control Lists.

Useful Definition

Server Administrator - The administrator of the actual server that DiveLine is running on, typically a network administrator within your company. (The Server administrator may or may not be the administrator of the DiveLine application). The Server administrator is responsible for granting access to various directories on the server to the DiveLine administrator, via a file named **access.txt**, as well as creating any network shares and setting the network authority necessary to allow file download by the specified users.

DiveLine Administrator - The administrator of the DiveLine application. The DiveLine administrator is responsible for DiveLine configuration, as well as for the creation of file packages for user download in DI-Updater.

DiveLine Server - The name and port number of the server that DiveLine is running on.

Package - A file or group of files configured by the DiveLine administrator for user download.

Home Location - The location of the DI-Update directory. The default is C:\Program Files\DI-Update.

Package Location - The Download Location used by a package.

Download Location - The location on the client machine to which packages will be downloaded.

Install Location - The full path of the Download Location and its subdirectories to which a package will be downloaded on the client machine.

DI-Updater files

DI-Updater files exist on both the server and client machines. Each is listed and described in the following sections.

Server Files

access.txt - Located in the `\dl-dataroot\config` directory, `access.txt` is a tab-delimited text file containing the list of server directories that the DiveLine administrator is able to use to create download packages.

.defn files - Located in the `\dl-dataroot\update` directory, `.defn` files contain all information defined for a package in the DI-Updater interface. The `.defn` files are read by DI-Updater to determine the packages that are listed for user download, the files each of those packages contains, and the location(s) of files within the package.

server.cfg - Located in the `\dl-dataroot\update` directory, `server.cfg` contains a list of all `.defn` files and the users or groups that have access to the package referred to by each `.defn` file.

update.cfg - Located in the `\DI-Update\config` directory, `update.cfg` contains the name and location of all download locations available in DI-Updater.

.info files - Located in the `\DI-Update\config` directory, `.info` files contain general information about the files included in a particular download package. (The `.info` files are only for informational purposes and should not be confused with `.defn` files described above.)

Client Files

.ulk file - A `.ulk` file is associated with DI-Updater. When DI-Updater is run, it opens the `.ulk` file and connects to the appropriate DiveLine server. The `.ulk` files are automatically associated with Updater.



DiveLine should be installed and configured for your users before configuring DI-Updater.

DI-UPDATER



Chapter 2

Installing & Configuring DI-Updater

This chapter provides information about how to install and configure DI-Updater on a DiveLine server.

Installing & Configuring DI-Updater on the DiveLine Server

This installation assumes that your \DI_Solution directory is on your C:\ drive.

1. Create a new folder called C:\Documents.
2. Create and put a new file named **access.txt** in the C:\DI_Solution\dl-dataroot\config directory.

The access.txt file is a tab-delimited text file that contains the list of server directories the DiveLine administrator is able to use to create download packages. It is created manually in a text editor by the Server administrator and should appear similar to the following:

Download	C:\DI_Solution\dl-dataroot\download
Documentation	C:\DI_Solution\documentation
Release Notes	C:\DI_Solution\release_notes
Other Documents	C:\Documents

DI-UPDATER

Keep the following points in mind:

- Paths may vary according to your server
 - Each aliased server directory must be shared for all users that will be downloading packages containing files from those directories (although individual files within the directories can be restricted). The access.txt file should contain, at the very least, an alias for the \dl-dataroot\download directory.
 - Aliases that are added to access.txt DO NOT need to be set in DI-Config. They function independently of DiveLine aliases.
 - The user running the DiveLine service MUST have read access to the access.txt file.
3. Create a directory in the DiveLine dataroot named “update”. The location of this directory should be C:\DI_Solution\dl-dataroot\update. This is the location of the server.cfg file, which stores the list of definition files for each package available for download.



The user running the DiveLine service MUST have read and write access to the C:\DI_Solution\dl-dataroot\update directory.

4. Double-click di-updater.exe.

The first time DI-Updater is run, it will prompt for the location of the DI-Update directory. The default location is C:\Program Files\DI-Update, but should be changed to C:\DI_Solution\DI-Update when installing on the DiveLine server.

In addition, it will look for: C:\Windows\diver.ini, in which it will create the entry:

```
[Updater]
Previous6.3DiveLine1=<servername>:<portnum>
Default Updater Server=<servername>:<portnum>
```

where <servername> is the DiveLine server selected for your Updater connection, and <portnum> is the port that DiveLine is running on.

DI-Updater will also try to create the following folders and files:

C:\DI_Solution\DI-Update
C:\DI_Solution\DI-Update\config
C:\DI_Solution\DI-Update\config\update.cfg
C:\DI_Solution\DI-Update\temp

The DI-Update directory is the “Home” directory where configuration and temporary files are stored. By default, it is also the destination for packages without unique install locations. This value may be changed from within DI-Updater (File >Preferences).

5. When prompted, enter the DiveLine server and port to connect to, in the format of <servername>:<portnum>.
6. Login using your administrative DiveLine user name and password to ensure that the software correctly connects to the DiveLine server.



Steps 4-6 will also be done on the client machine (see **Chapter 5, Viewing & Downloading Packages**), and the location specified in step 4 will be the default download location on the client machine.

7. Close DI-Updater.

DI-UPDATER

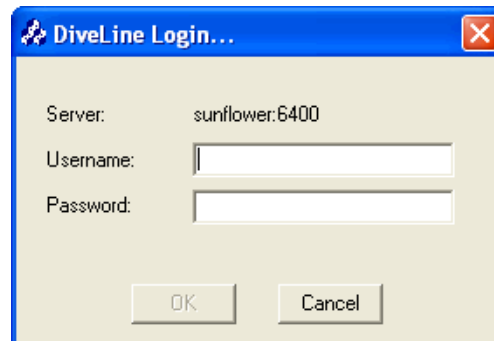
Chapter 3

The DI-Updater Interface

This chapter described the DI-Updater interface and its usage.

Login Screen

When running DI-Updater on a client or server machine, you will be prompted with the following DiveLine server login screen:

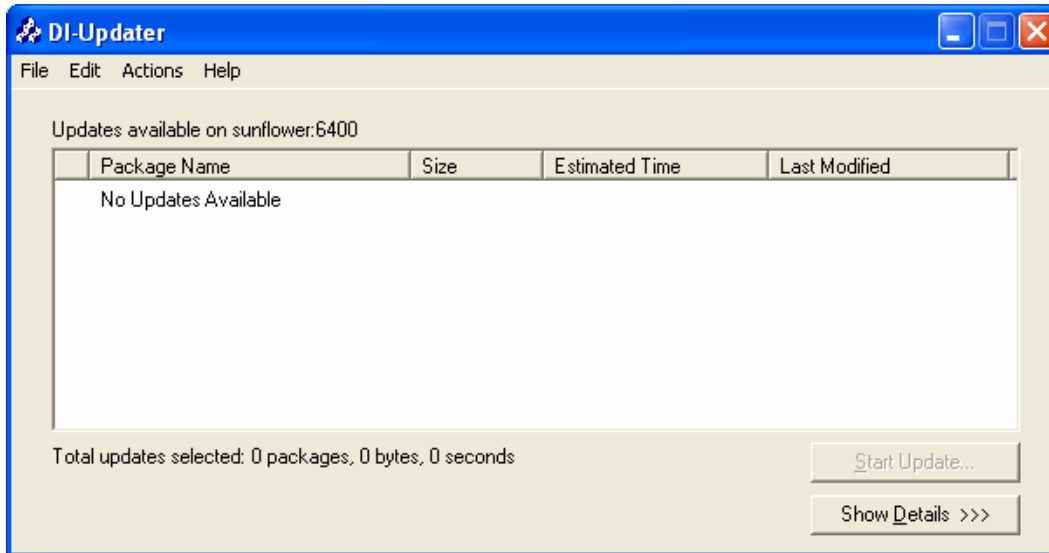


Enter your DiveLine Username and Password and click **OK** to connect.

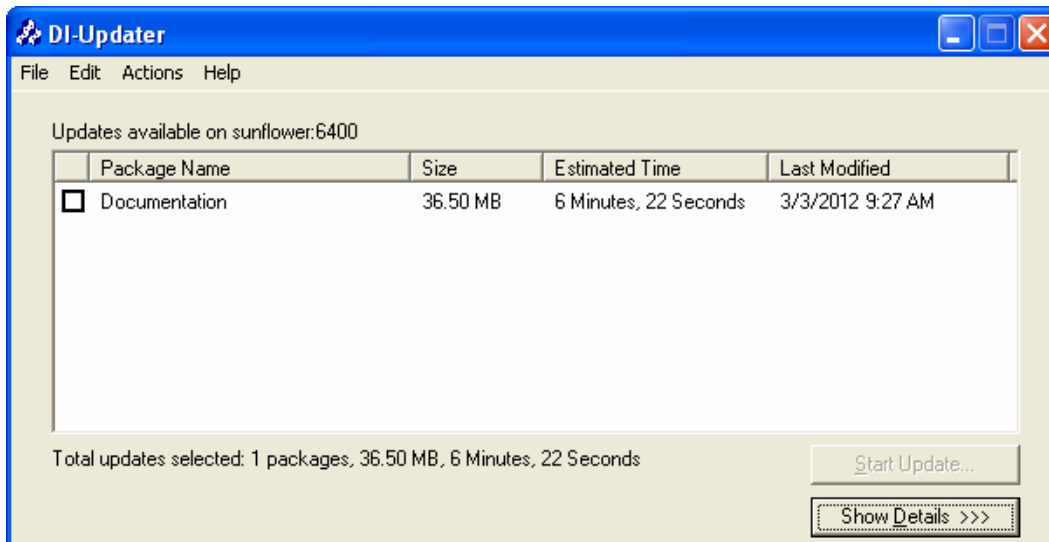
Clicking **Cancel** will open the Select DiveLine Server... dialog (shown on [page 3-6](#)), allowing you to enter a different server name and port number for the DiveLine server you wish to connect to.

Startup Screen

After logging in, you will see the following startup screen:



Alternatively, once packages have been configured (see **Chapter 4, Creating & Editing Packages**), you will be presented with something similar to the following after login:



Updates Available Area

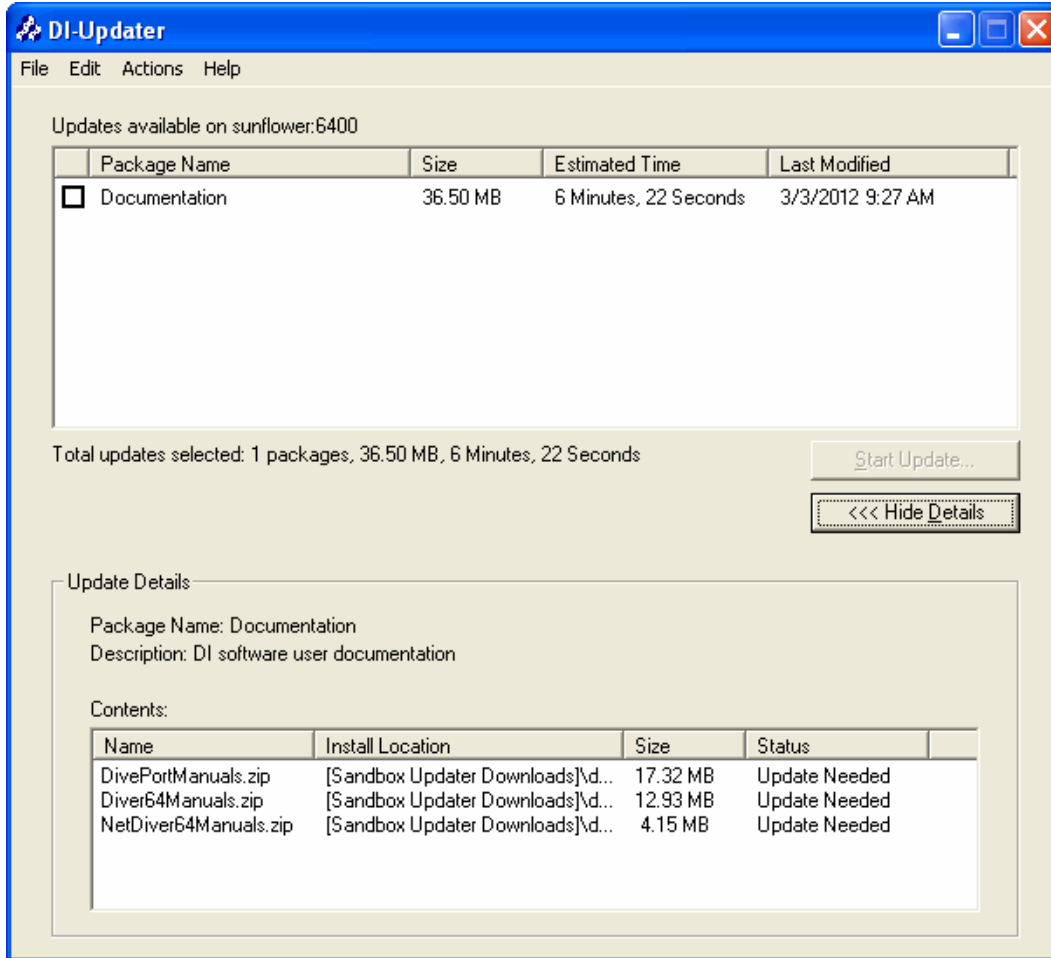
- **Package Name** - Shows a list of the names of all packages available for download. Users will only see packages for which they have been granted access.
- **Size** - Shows the size of the specified package.
- **Estimated Time** - Shows the estimated amount of time it will take for the named package to download.
- **Last Modified** - Shows the last time the package was changed.
- **Start Update** - This button starts the download of the selected package or packages. Corresponds to the **Action > Start Update** menu item.
- **Show/Hide Details** - This button displays or hides the Update Details area of the DI-Updater startup screen.



Previously downloaded packages are also listed, without check boxes, and are sorted to the bottom of the package list.

Update Details Area

If the Show Details button has been clicked, the initial startup screen will expand to display the Update Details Area shown here.

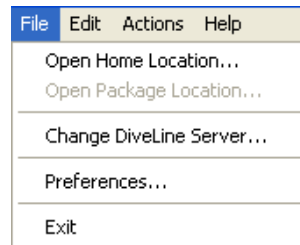


- **Name** - Lists the name of each file included in the currently highlighted package.
- **Install Location** - Lists the full path (the Download Location and its subdirectories) to which a package will be downloaded on the client machine.
- **Size** - Lists the size of the specified file.
- **Status** - Shows whether or not an update of the specified file is needed.

Menus

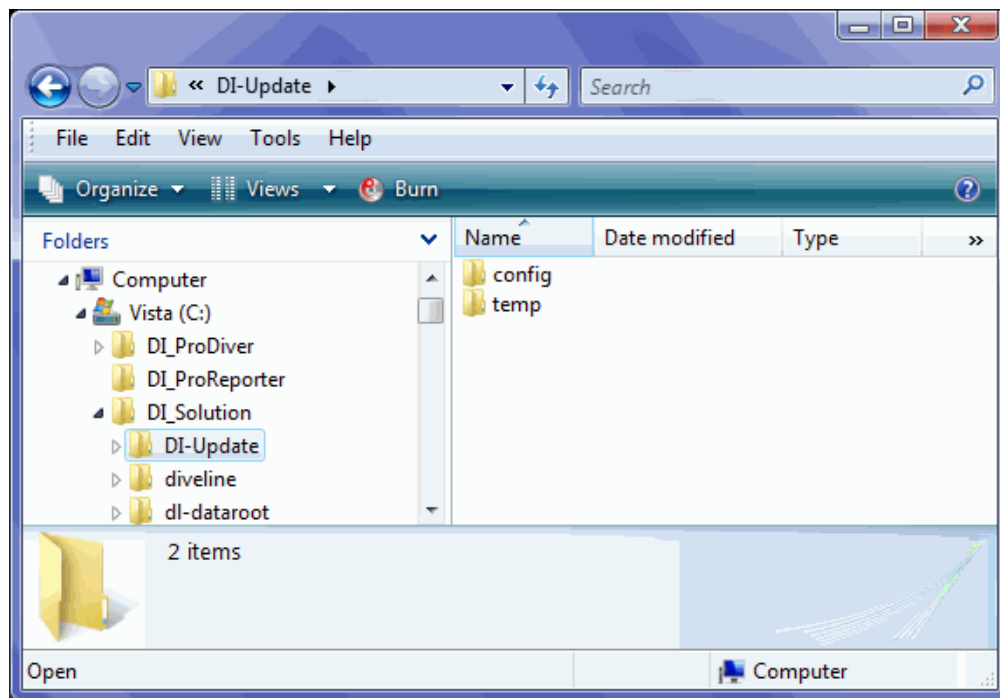
DI-Updater contains four menus. File, Edit, Actions, and Help.

File Menu



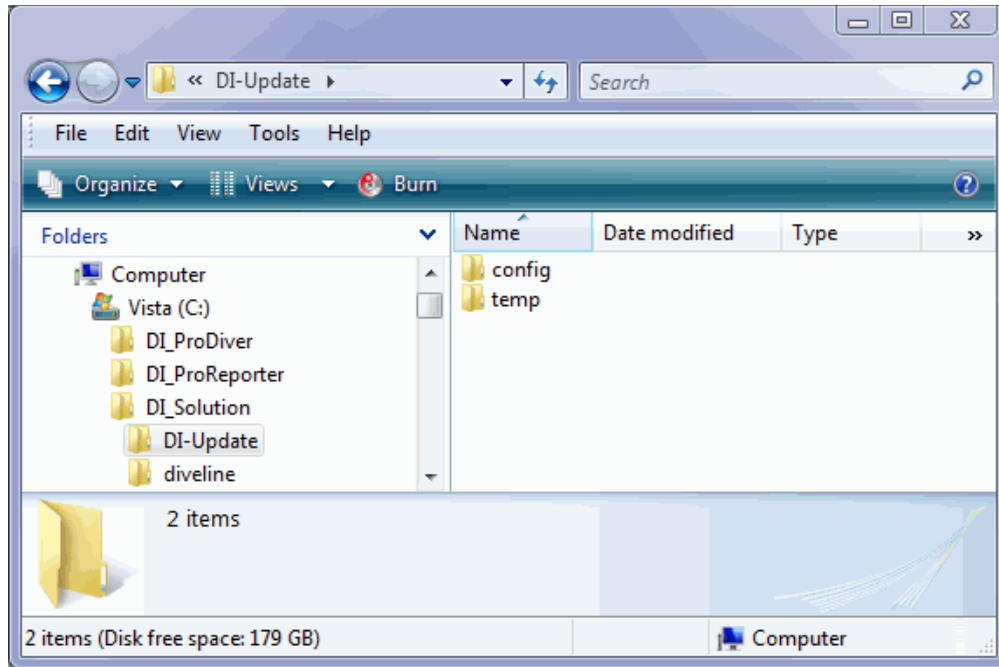
Open Home Location...

When selected, Open Home Location will open an Explorer window to the location of the DI-Update directory on the DiveLine server.



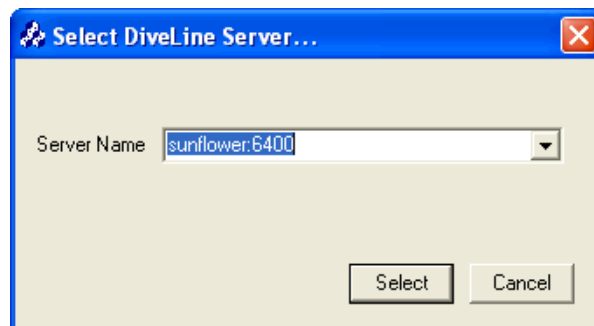
Open Package Location...

When selected, Open Package Location will open an Explorer window to the Download Location used by a package.



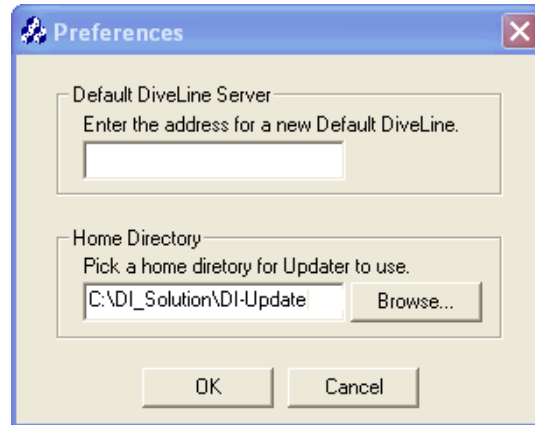
Change DiveLine Server...

Change DiveLine Server... opens the Select DiveLine Server... dialog, allowing you to specify the server name and port number of a different DiveLine server.



Preferences...

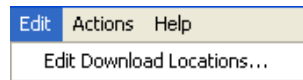
The Preferences... menu option allows you to change the **Default DiveLine Server** that DI-Updater connects to, and to choose a **Home Directory** for DI-Updater.



Exit

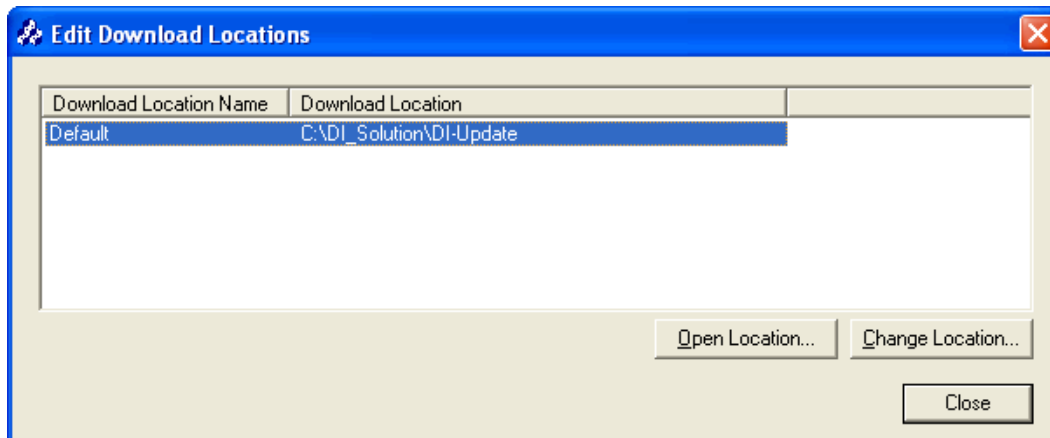
Exit closes the DI-Updater application.

Edit Menu

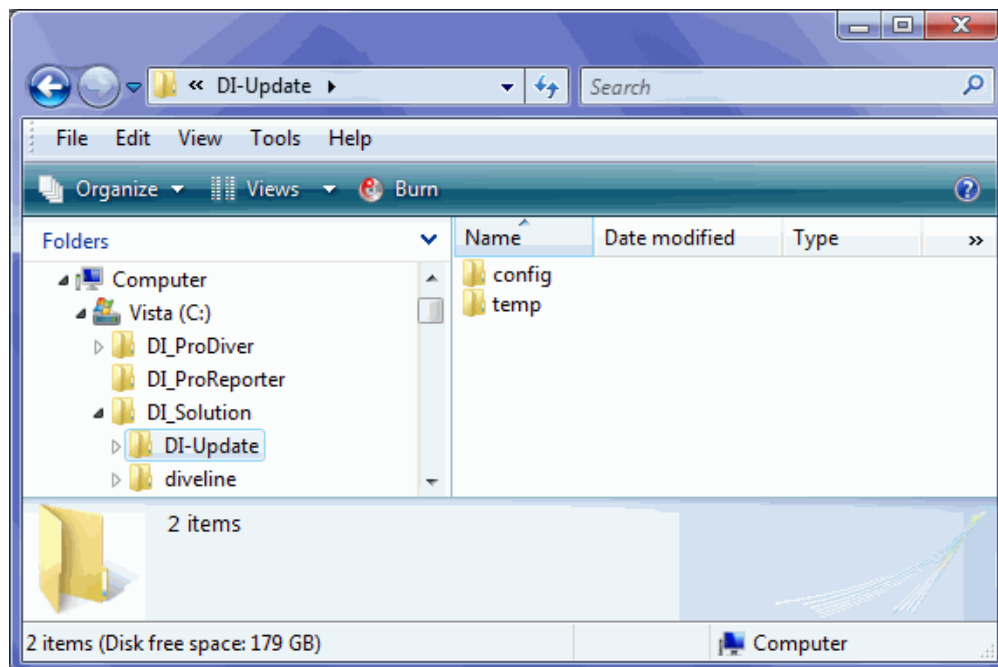


Edit Download Locations...

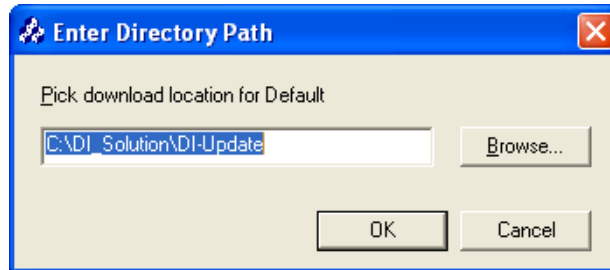
The DI-Updater end user can use the **File > Edit Download Locations...** menu item to edit the path of any existing Download Location.



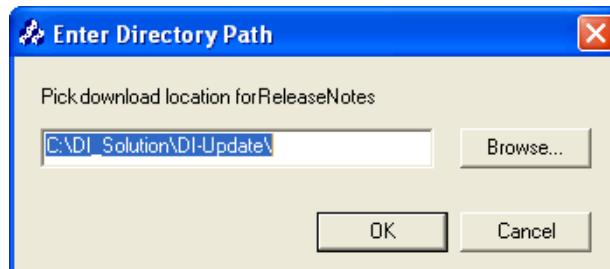
Clicking the **Open Location** button will open an Explorer window to the location of the selected Download Location on the client computer.



Clicking the **Change Location** button will open a dialog allowing the user to browse to a new location for the selected Download Location.

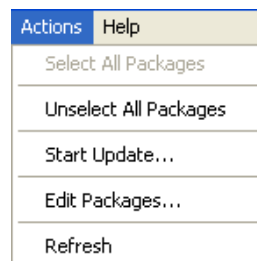


New Download Locations can only be created by a DiveLine administrator. When a DiveLine administrator creates a new package, and a Download Location that is not yet defined on the client machine has been specified, the user will be prompted to enter a directory path for this new Download Location, as shown below:



The new Download Location will now appear in the list of Download Locations on the client computer.

Actions Menu



Select All Packages

Selects all packages available for update by placing a check in the checkbox next to the package names. (This can also be done manually, by checking each checkbox.)

Unselect Packages

Unchecks all selected packages.

Start Update...

Starts the download of all selected packages.

Edit Packages...

Available for DiveLine admin users only, the Edit Packages... menu item allows you to create, edit, and delete the packages that are available to users for download. For more information, see **Chapter 4, Creating & Editing Packages**.

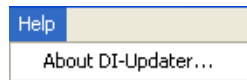
Refresh

Refreshes the list of available updates.



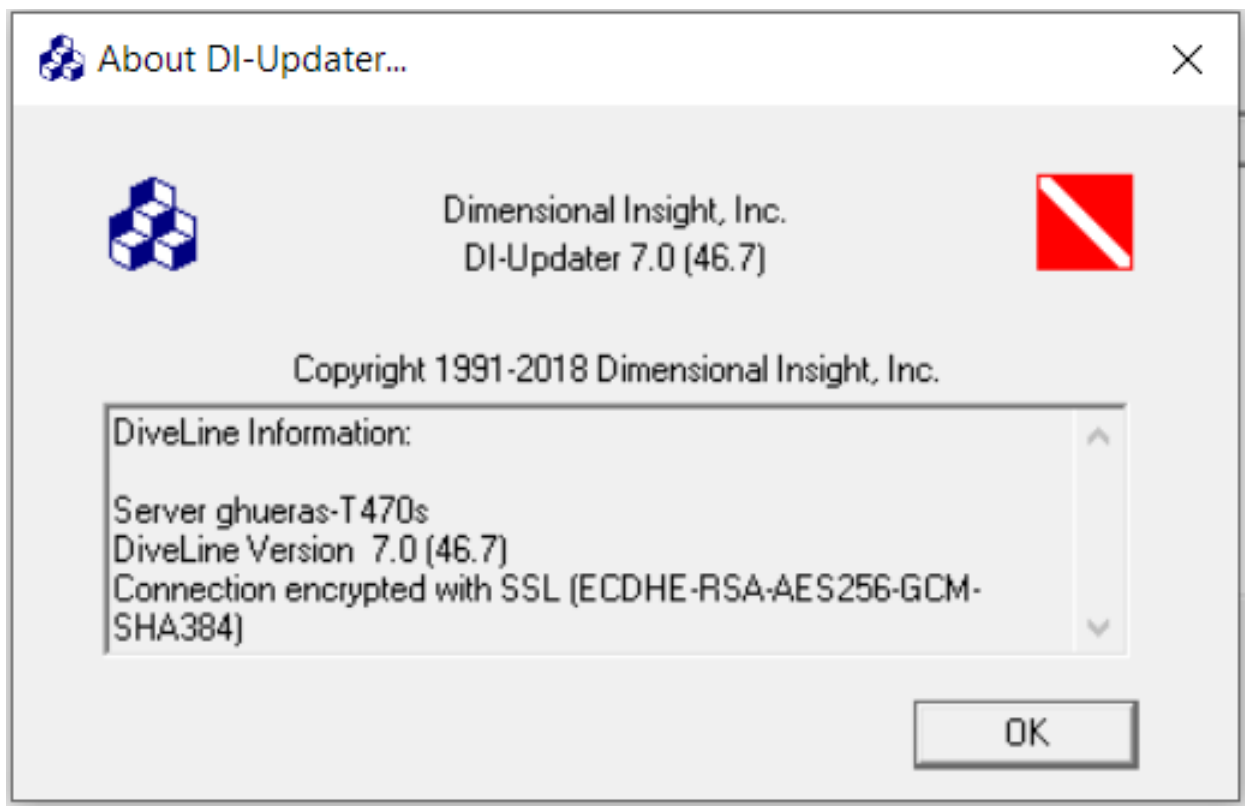
Selecting the Refresh menu item will unselect all currently selected packages.

Help Menu



About DI-Updater...

Provides information about the version of DI-Updater and the version, server name, and port number of the DiveLine server that DI-Updater is currently connected to.



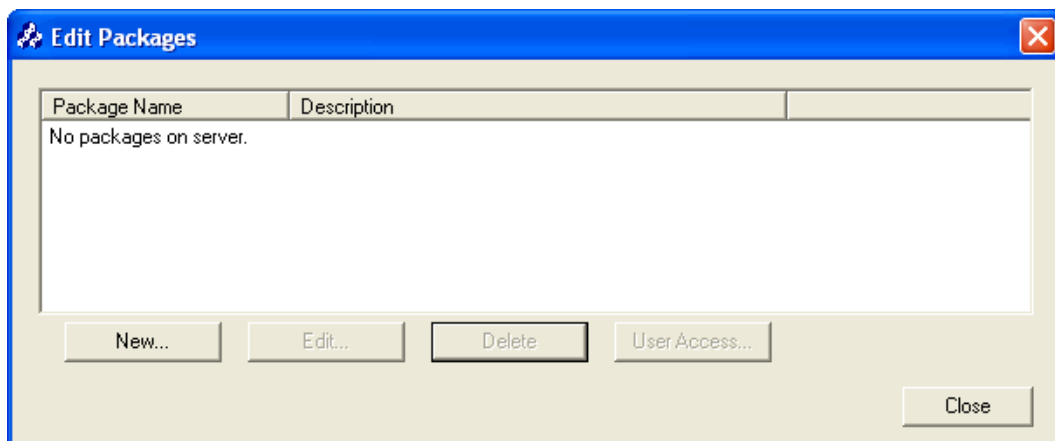
DI-UPDATER

Chapter 4

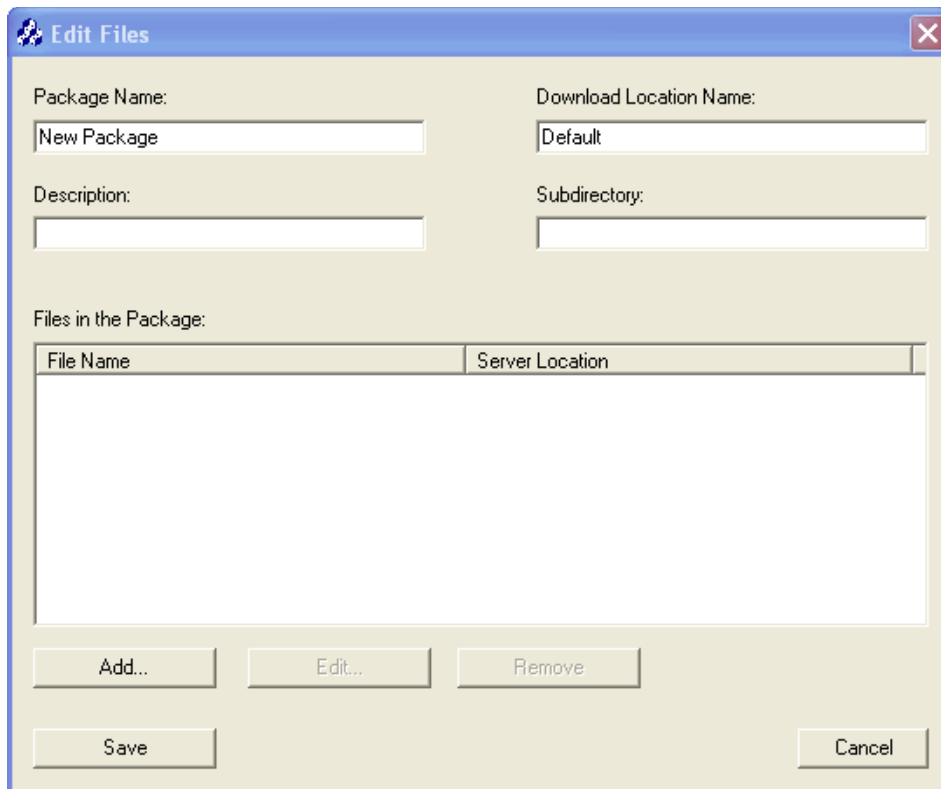
Creating & Editing Packages

This chapter describes the process for creating and editing DI-Updater file packages on the Diveline server for end-users to download from their desktops.

1. Start DI-Updater by double-clicking the executable.
2. Go to **Actions > Edit Packages...** to open the Edit Packages dialog.



3. Click **New...** to open the Edit Files dialog.



The screenshot shows the 'Edit Files' dialog box. It has a title bar with a close button. The dialog contains several text input fields: 'Package Name' (containing 'New Package'), 'Download Location Name' (containing 'Default'), 'Description' (empty), and 'Subdirectory' (empty). Below these is a table with two columns: 'File Name' and 'Server Location'. At the bottom are buttons for 'Add...', 'Edit...', 'Remove', 'Save', and 'Cancel'.

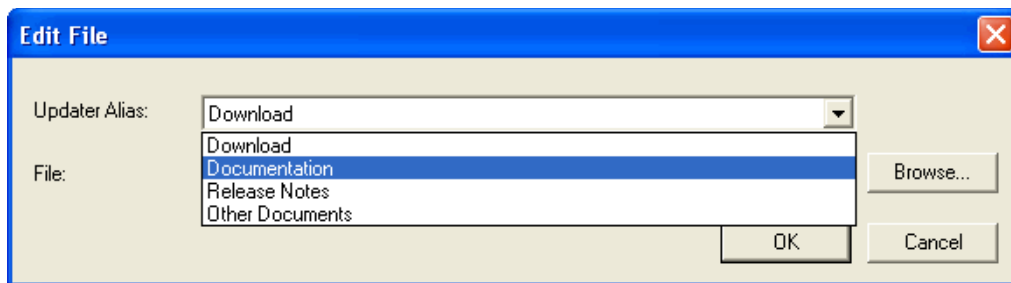
4. Enter the desired name in the **Package Name:** text box. This might be something like “Documentation”.
5. Enter the name of the desired Download Location in the **Download Location Name:** text box. This might be something like “Updater Download”.



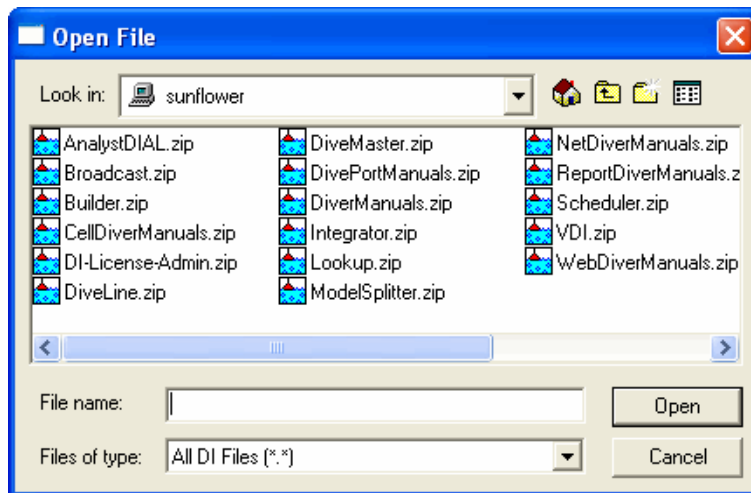
If the specified download location does not exist on the client machine, the user will be prompted to browse to the desired location for the download location. The new download location will then appear in the **Edit > Edit Download Locations...** list for the client machine.

6. Enter text that briefly describes the purpose or contents of the package in the **Description:** text box. This might be something like “DI software user documentation”.

7. Enter the path of any subdirectories of the Download Location that should be created when the package is download in the **Subdirectory:** text box. This might be something like: /documentation. (Back slashes, rather than forward slashes, must be used when defining this path.)
8. Click the **Add** button to open the Edit File dialog and add new files to the package.



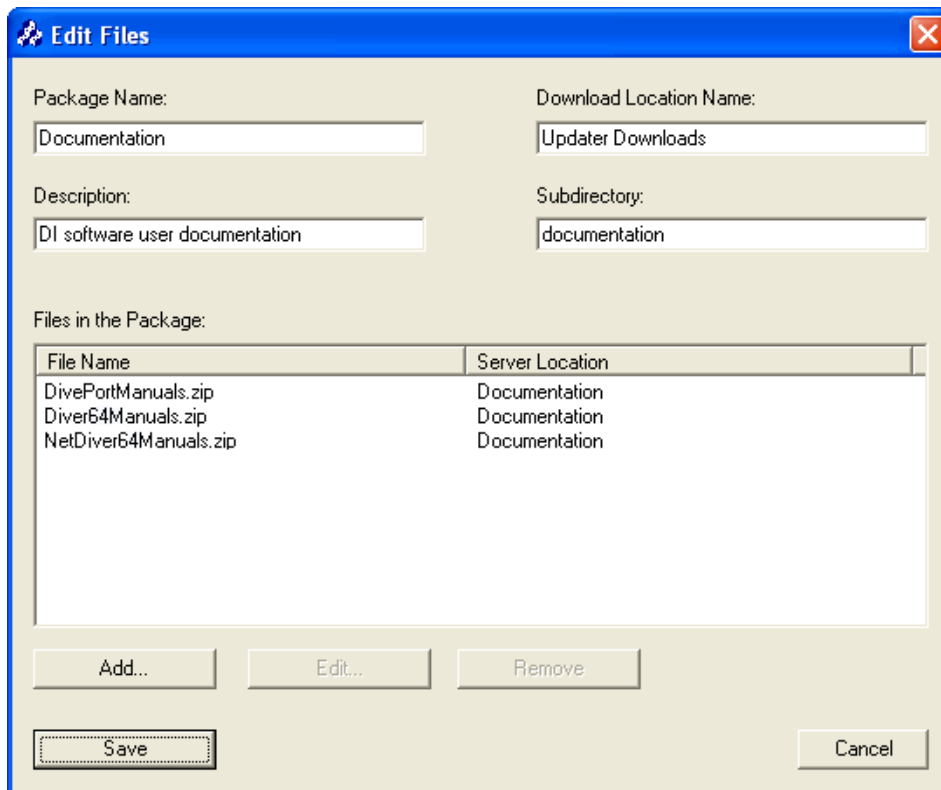
9. Select the Updater Alias from which to obtain files. (The list of available aliases is determined by the directories set in the access.txt file by the server administrator.)
10. Click **Browse** to view the Open File dialog. Select the file(s) to be added and click **Open** then **OK**.





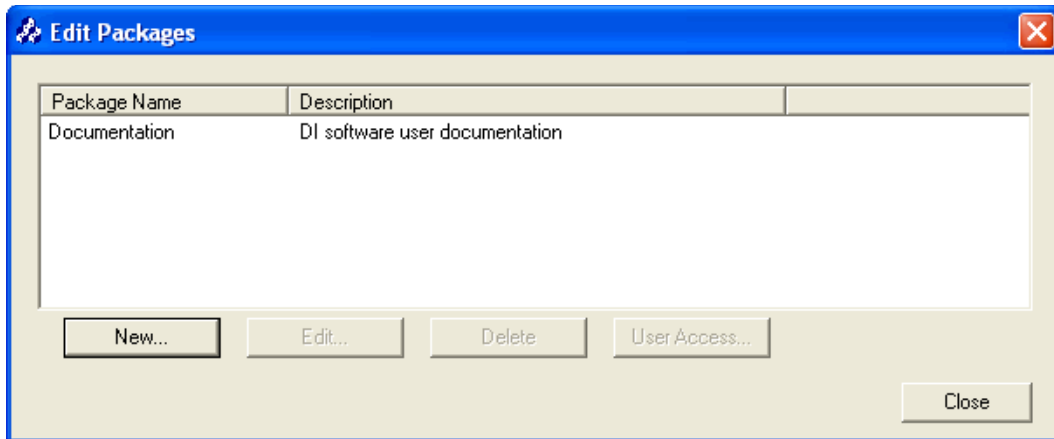
This dialog allows multiple file selection using the Ctrl or Shift keys. The list of files will appear in the dialog edit box as a space-delimited set of quoted strings. For example: "aaa.mdl" "bbb.mdl" "ccc.mdl". When you click "Open", each selected file will be added as a new entry in the package file list view. The package file list view also allows multiple selections for deleting a large number of files.

11. Once all needed text fields have been filled in and all necessary files have been added to the package as shown below, click **Save** and select **Yes** to commit changes to the server.



12. Click **Cancel** then **Close** to return to the Edit Packages dialog.

You will now see the newly created Package.



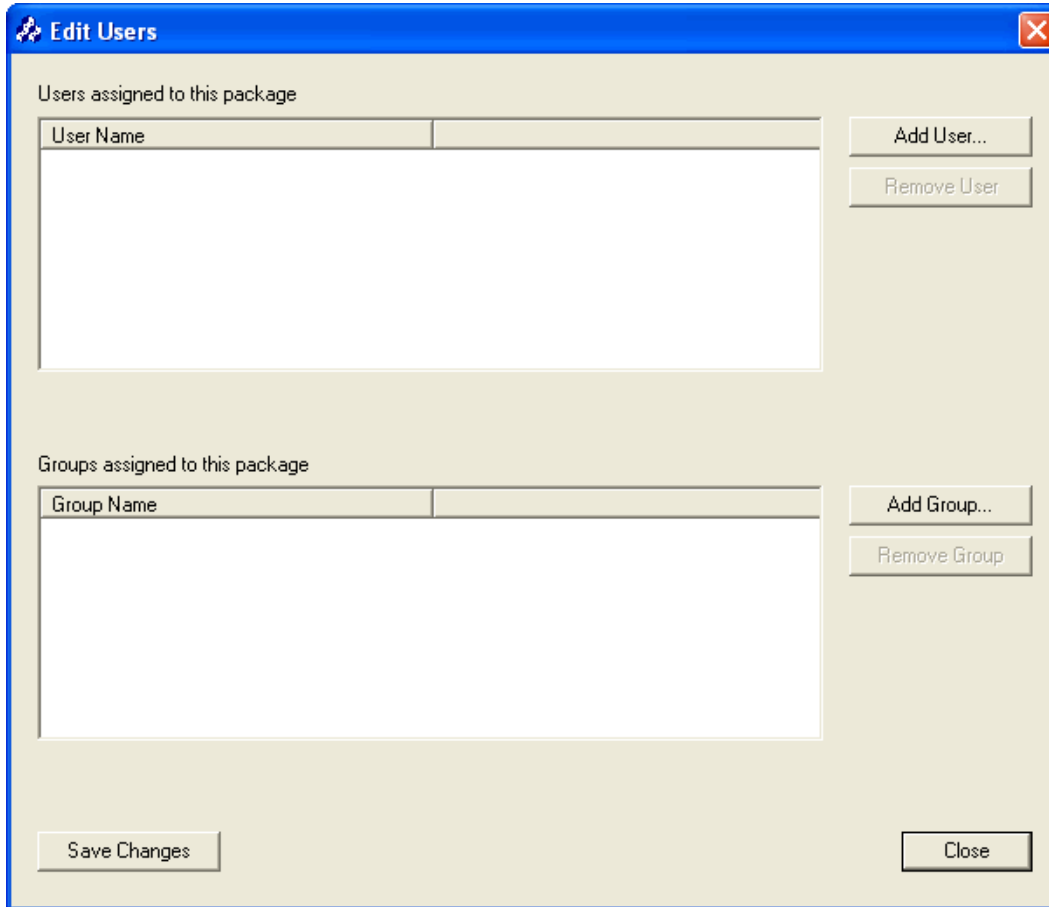
To edit the contents of a package from the **Edit Files** dialog:

1. Select the package.
2. Click **Edit**
3. Make the needed changes
4. Click **Save**
5. Select **Yes**.

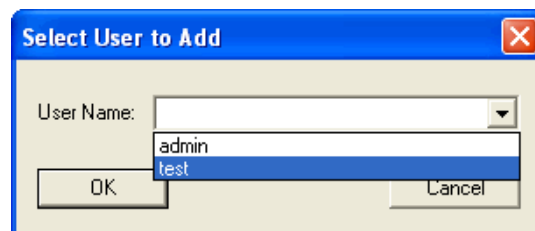
To remove a package, select it and click **Remove**.

Once a package has been created, user access to the package must now be configured so that users or groups of users are able to download it.

1. Highlight the package name in the Edit Packages dialog and Click **User Access...** to open the Edit Users dialog.

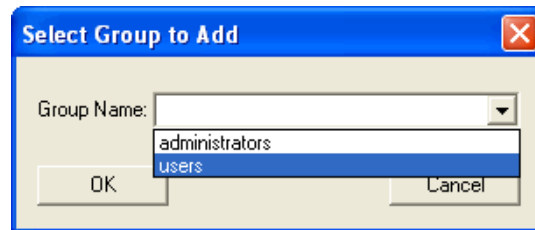


2. To grant access to a user or list of users, click **Add User...** and select the desired user from the **User Name** pulldown. Click **OK**.



3. Repeat until all necessary users have been added.

-
4. To grant access to a group or list of groups, click **Add Group...** and select the desired group from the **Group Name** pulldown. Click **OK**.



5. Repeat until all necessary groups have been added.
6. Click **Save** and select **Yes** to commit changes to the server.
7. Click **Close** to return to the Edit Packages dialog.



DI-Updater access to a Model via a download package is independent of download access granted to a user in DI-Config.



User access to files using DI-Updater is stored as part of the download package and is NOT affected or controlled by DiveLine ACL's.



When a Model is included in a package, all continuation files are automatically included.

DI-UPDATER

Chapter 5

Viewing & Downloading Packages

This chapter describes the steps to view and to download DI-Updater packages to a client machine.

1. Double-click updater.exe.

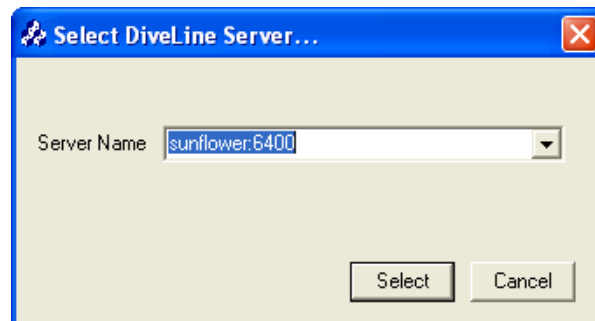
The first time DI-Updater is run, it will prompt for the location of the DI-Update directory. The default location is C:\Program Files\DI-Update.

In addition, it will look for: C:\Windows\diver.ini, in which it will create the entry:

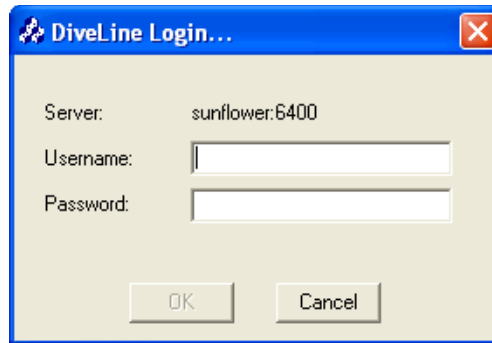
```
[Updater]
Previous6.3DiveLine1=<servername>:<portnum>
Default Updater Server=<servername>:<portnum>
```

where <servername> is the DiveLine server selected for your Updater connection, and <portnum> is the port DiveLine is running on.

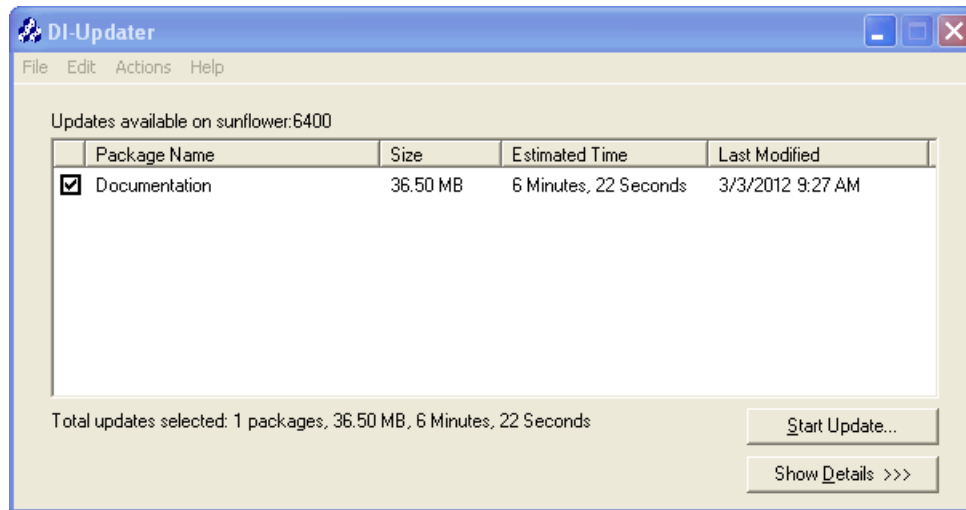
2. Enter the DiveLine server and port to connect to, in the format <servername>:<portnum>. For example:



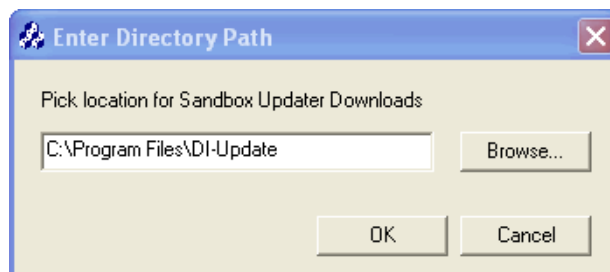
3. Login using your DiveLine username and password.



4. Select the package(s) to be downloaded by placing a check in the box next to each desired package name. You can select all available packages using the **Actions > Select All Packages** menu item.



5. Click the **Start Update...** button, or select **Actions > Start Update...**
6. If prompted, browse to the desired location for any new download locations and click OK.



Once the update is complete, you will be able to access all files within the downloaded packages in the specified download locations.

Index



Commands

.cfg files 1-3, 2-2
.defn files 1-3
.info files 1-3
.ulk files 1-3

A

access.txt file 1-3
Actions Menu 3-9
 Edit Packages 3-10
 Refresh 3-10
 Select All Packages 3-9
 Start Update 3-10
 Unselect Packages 3-10

B

Basic Terminology 1-2
 DiveLine Administrator 1-2
 DiveLine Server 1-2
 Download Location 1-2
 Home Location 1-2
 Install Location 1-2
 Package 1-2
 Package Location 1-2
 Server Administrator 1-2

C

Change DiveLine Server 3-6

D

Default DiveLine Server 3-7
DI-Updater
 About 3-11
 Configuration of 2-1
 Creating and Editing Packages 4-1
 Definition of 1-2
 File Types 1-3
 .cfg 1-3
 .defn 1-3
 .info 1-3
 .ulk 1-3
 access.txt 1-3
 server.cfg 1-3
 update.cfg 1-3
 FileTypes
 .cfg 2-2
 Installation of 2-1
 Interface 3-1
 Login Screen 3-1
 Menus 3-5
 Startup Screen 3-2
Dimensional Insight
 Support 1-1
DiveLine Administrator
 Definition of 1-2
DiveLine Server

DI-UPDATER

Definition of 1-2
Download Location
Definition of 1-2

E

Edit Download Locations 3-8
Edit Menu 3-8
Edit Download Locations 3-8
Edit Packages 3-10
Exit 3-7

F

File Menu 3-5
Change DiveLine Server 3-6
Exit 3-7
Open Home Location 3-5
Open Package Location 3-6
Preferences 3-7

H

Help Menu 3-11
About DI-Updater 3-11
Home Directory 3-7
Home Location
Definition of 1-2

I

Install Location
Definition of 1-2

L

Login Screen 3-1

O

Open Home Location 3-5
Open Package Location 3-6

P

Package
Creation of 4-1
Definition of 1-2
Editing of 4-1
Package Location
Definition of 1-2
Preferences 3-7
Default DiveLine Server 3-7
Home Directory 3-7

R

Refresh 3-10

S

Select All Packages 3-9
Server Administrator
Definition of 1-2
server.cfg file 1-3, 2-2
Start Update 3-10
Startup Screen 3-2
Update Details Area 3-4
Updates Available Area 3-3
Support 1-1

U

Unselect Packages 3-10
update.cfg file 1-3

W

What is DI-Updater 1-2